

The Thailand Compendium

A Compilation of Information for Cruisers in Thailand



IMPORTANT: USE ALL INFORMATION IN THIS DOCUMENT AT YOUR OWN RISK!!

Rev 2026.2 – Mar 18, 2026

Please send us updates to this guide!

Keep this compendium alive by being a contributor. We are especially looking for information on places where we have no cruiser information and new information on existing content. It's easy to participate and will help many other cruisers for years to come. Simply email your updates along with your boat details.

Email Soggy Paws at [sherry –at- svso](mailto:sherry-at-svsoggypaws-dot-com)ggypaws –dot- com.
You can also contact us on Sailmail at WDI5677

The current home (and the most up to date) version of this document is:

[If you found this compendium posted elsewhere, it might not be the most current version. Please check the above site for the most up to date copy and remember, it will always be free!](http://svsoggypaws.com/files/#se-asia</p></div><div data-bbox=)

Revision Log

Many thanks to all who have contributed over the years!!

Rev	Date	Notes
2026.2	18-Mar-2026	Marine services recommendations for various services.
2026.1	23-Feb-2026	Doctor and Dentist Recommendations in Phuket. Buying a liferaft in Phuket. Updated holiday list to 2026. Customs check-in/check-out procedures.
2025.3	27-Oct-2025	Numerous small updates. Updates on check-in procedures and pre-arrival notices and eVisa. Added to Diesel Mechanics section in Phuket. Added more Similans Park Info.
2025.2	15-Aug-2025	Feedback on PSS Marina, Satun, more info about Port Takola, park chartlet for Phi Phi. Combined the 2 sections on marinas and haulout into one.
2025.1	08-Feb-2025	Adding info on services that people are commonly requesting (car rental, LPG fill, diesel, water, groceries). Added new large haulout yard (Blue Ocean Shipyard), updated holiday schedule to 2025
2024.2	12-Oct-2024	More on the new eVisa
2024.1	Jan 23, 2024	More info, still far from complete. More on marinas.
2023.2	Oct 5, 2023	Added some info on marinas and haulout yards.
2023.1	Sep 10, 2023	Collection of notes first assembled

Table of Contents

1	INTRODUCTION.....	6
1.1	ORGANIZATION OF THE GUIDE.....	6
1.2	OVERVIEW OF THE AREA.....	6
1.2.1	<i>World War II in Thailand</i>	6
1.3	TIME ZONES.....	7
1.4	NAVIGATION AND CHARTING.....	7
1.4.1	<i>Sources for Satellite Charts (KAP and MBTiles)</i>	7
1.4.2	<i>Sources for Satellite Charts Using a Tablet</i>	8
1.4.3	<i>Why You Need Satellite Charts</i>	8
1.5	WEATHER IN THIS AREA.....	9
1.5.1	<i>West Coast</i>	9
1.5.2	<i>East Coast</i>	10
1.5.3	<i>Weather Sources</i>	10
1.6	CUSTOMS & IMMIGRATION.....	10
1.6.1	<i>The overall process</i>	10
1.6.2	<i>Pre-Arrival (Visas, Cruising Permits, Insurance)</i>	11
1.6.3	<i>Pre-Arrival Notification</i>	13
1.6.4	<i>Immigration – Initial Check-In</i>	13
1.6.5	<i>Immigration – Extending Visas</i>	18
1.6.6	<i>Immigration – Leaving your Boat</i>	19
1.6.7	<i>Customs</i>	20
1.6.8	<i>Health / Quarantine</i>	22
1.6.9	<i>Port Authority / Harbormaster</i>	23
1.6.10	<i>Stopping at Places Before Officially Clearing In</i>	23
1.6.11	<i>Pets</i>	23
1.6.12	<i>Port Clearances Between Ports in Thailand</i>	23
1.6.13	<i>Checking Out</i>	23
1.7	LOCAL INFORMATION AND CUSTOMS.....	24
1.7.1	<i>Public Holidays 2026</i>	24
1.7.2	<i>The Language Factor</i>	25
1.7.3	<i>The Religion Factor</i>	25
1.7.4	<i>Getting Around in Thailand</i>	25
1.7.5	<i>Leaving a Clean Wake</i>	26
1.8	YACHTSMEN'S SERVICES - OVERVIEW.....	27
1.8.1	<i>Money – Non-Cash</i>	27
1.8.2	<i>Money – Cash and ATMs</i>	27
1.8.3	<i>Diesel and Gasoline</i>	27
1.8.4	<i>Propane (Cooking Gas) LPG</i>	28
1.8.5	<i>Groceries</i>	29
1.8.6	<i>Water</i>	30
1.8.7	<i>Boat Parts & Repairs</i>	30
1.8.8	<i>Medical Services</i>	35
1.9	MARINAS, HAULOUT, STORAGE, AND REPAIR FACILITIES.....	35
1.9.1	<i>Marina & Haulout Comparisons</i>	35
1.9.2	<i>Coconuts Boatyard (Chalong Bay Phuket)</i>	36
1.9.3	<i>Phuket M9 Marina (Chalong Bay Phuket)</i>	37

1.9.1	<i>Ratanachai Shipyard (Chalong Bay Phuket)</i>	37
1.9.2	<i>Ao Po Grand Marina (Phuket)</i>	37
1.9.3	<i>Phuket Boat Lagoon Marina</i>	38
1.9.4	<i>Phuket Premier Boatyard</i>	40
1.9.5	<i>Phuket Yacht Haven Marina</i>	40
1.9.6	<i>Coconut Cove Moorings, Phuket</i>	41
1.9.1	<i>Port Takola, Krabi</i>	41
1.9.2	<i>Krabi Boat Lagoon Marina</i>	43
1.9.3	<i>Krabi River Marina</i>	44
1.9.4	<i>Satun PSS Shipyard</i>	44
1.9.5	<i>Blue Ocean Shipyard near Trang</i>	48
1.9.6	<i>Pattaya Ocean Marina Jomtien</i>	49
1.10	EMBASSIES AND CONSULATES	50
1.11	GETTING VISITORS IN AND OUT	50
1.12	COMMUNICATIONS	50
1.12.1	<i>Social Media</i>	50
1.12.2	<i>VHF</i>	50
1.12.3	<i>SSB Radio Frequencies and Nets</i>	51
1.12.4	<i>Cell Phones, and Internet Access</i>	51
1.12.5	<i>Mail & Shipping Stuff In</i>	51
1.12.6	<i>News</i>	51
1.13	DIVING.....	51
1.14	CRUISING INFORMATION SOURCES	51
1.14.1	<i>Local Websites</i>	51
1.14.2	<i>Cruiser Reports</i>	51
1.14.3	<i>Noonsite</i>	52
1.14.4	<i>Seven Seas Cruising Association</i>	52
1.14.5	<i>Ocean Cruising Club</i>	52
1.15	PRINTED SOURCES.....	52
1.15.1	<i>Southeast Asia Cruising Guide – Vol II - 2008</i>	52
1.15.2	<i>Southeast Asia Pilot – 5th Ed</i>	53
1.15.3	<i>Lonely Planet Thailand (latest edition)</i>	53
1.15.4	<i>Thai Phrasebook</i>	53
1.15.5	<i>Diving Guides</i>	53
1.16	RECOMMENDED READING	53
2	THAILAND’S WEST COAST (S TO N).....	53
2.1	OVERVIEW	53
2.2	KO LIPE	53
2.3	KO ROK	54
2.4	KO MUK.....	54
2.5	KO RACHA	54
2.5.1	<i>Ko Racha Yai</i>	54
2.5.2	<i>Ko Racha Noi</i>	55
2.6	KO LANTA	55
2.7	KO PHI PHI.....	55
2.8	KRABI	57
2.8.1	<i>Officialdom</i>	57
2.8.2	<i>Yacht Services</i>	57

2.9	PHANG NA BAY	58
2.9.1	<i>Ko Panyee</i>	58
2.10	PHUKET	60
2.10.1	<i>Officialdom</i>	60
2.10.2	<i>Yachtsmen's Services in Phuket</i>	60
2.10.3	<i>Chalong Bay</i>	64
2.10.4	<i>Nai Harn Bay</i>	65
2.10.5	<i>Kamala Bay</i>	66
2.10.6	<i>Bang Tao Bay</i>	66
2.10.7	<i>Ko Phyam</i>	66
2.11	SIMILIAN ISLANDS (PARK)	66
2.12	SURIN ISLANDS (PARK)	67
2.12.1	<i>West Side Anchorages/Moorings</i>	67
2.12.2	<i>East Side Anchorages/Moorings</i>	67
2.13	RANONG	68
2.13.1	<i>Diving</i>	69
3	THAILAND'S EAST COAST, S AND W OF PATTAYA	69
3.1	SONGKLA	69
3.2	KOH SAMUI	70
3.3	KOH PHA NGAN	71
3.4	KOH TAO	71
3.5	PATTAYA / BANGKOK AREA	71
3.6	KOH LAM & KOH KRAM (JUST S OF PATTAYA)	72
4	THAILAND'S EAST COAST, E OF PATTAYA	72
4.1	KOH SAMED	72
4.2	CHANTIBURI	72
4.3	KOH CHANG	72
4.4	KOH MAK	73
4.5	KOH KUT	74
5	THAI WORDS FOR SAILORS	74

1 Introduction

The original Compendium for the Tuamotus in French Polynesia started out as a way for s/v Soggy Paws and a few friends to organize notes and various internet sources on the Tuamotus, prior to our cruise there in Spring of 2010. Later, it became a way for us to pass on what we've learned while cruising the Tuamotus in 2010 and 2011. Now the idea has migrated with Soggy Paws, from the Tuamotus, to the Marquesas, to the Societies, Hawaii, the Cooks and Samoas, Tonga, Fiji, the islands between Fiji and the Marshall Islands, the Marshall Islands, Micronesia the Philippines, and now Malaysia, Indonesia, and Thailand (Singapore is included in the Malaysia Compendium).

We have not cruised Thailand yet, so this Compendium is currently quite thin. If you'd like to help fill it out, please email me your updates!

If you haven't yet found our other 'Compendiums', they're available online at <http://svsoggyaws.com/files/>

This is not intended to replace the guidebooks or charts, but to supplement out-of-date guides with recent cruiser first-hand reports, and fill in places that the guides don't cover.

To compile this 'compendium', we have used all sources at our disposal, including websites, blogs, emails, and our own experience. We always try to indicate the source of our information, and the approximate time frame.

If your information is included in this guide, and you object to its inclusion, please just email us, and we'll remove it. But this is a non-commercial venture mainly to help cruisers from all of our collective experiences.

1.1 Organization of the Guide

This guide is loosely organized by east coast and west coast Thailand. As most cruisers visiting Thailand arrive from Indonesia and travel up the west coast, that section is first, and organized from south to north (Malaysian border to Myanmar border).

1.2 Overview of the Area

Thailand spans two coasts, the west coast has a very short coastline. The east coast spans quite a bit of coastline, and includes Bangkok.

Like Malaysia and Indonesia, cruising Thailand is influenced by the changing monsoon winds, and the "Sumatra" winds from Indonesia. Most people actively cruise the west coast Thailand during Dec-March (the time of NE winds) and travel around to the east coast during the SW wind (and Sumatra) season.

1.2.1 World War II in Thailand

[Wikipedia](#) – 2023: Thailand officially adopted a neutral position during World War II until the five hour-long Japanese invasion of Thailand on 8 December 1941, which led to an armistice and military alliance treaty between Thailand and the Japanese Empire in mid-December 1941.

At the start of the Pacific War, the Japanese Empire pressured the Thai government to allow the passage of Japanese troops to invade British-held Malaya and Burma. After the invasion,

Thailand capitulated. The Thai government under Plaek Phibunsongkhram (known simply as Phibun) considered it profitable to co-operate with the Japanese war efforts, since Thailand saw Japan – who promised to help Thailand regain some of the Indochinese territories (in today's Laos, Cambodia, and Vietnam) which had been lost to France – as an ally against Western imperialism.

Following added pressure from the start of the Allied bombings of Bangkok due to the Japanese occupation, Axis-aligned Thailand declared war on the United Kingdom and the United States and annexed territories in neighbouring countries, expanding to the north, south, and east, gaining a border with China near Kengtung.

After becoming an ally of the Empire of Japan, Thailand retained control of its armed forces and internal affairs. The Japanese policy on Thailand differed from their relationship with the puppet state of Manchukuo. Japan intended bilateral relationships similar to those between Nazi Germany and Finland, Bulgaria and Romania. However, Thailand at that time was labelled by both the Japanese and the Allies as the "Italy of Asia" or "Oriental Italy", a secondary power.

Meanwhile, the Thai government had split into two factions: the Phibun regime and the Free Thai Movement, a well-organised, pro-Allied resistance movement that eventually numbered around 90,000 Thai guerrillas, supported by government officials allied to the regent Pridi Banomyong. The movement was active from 1942, resisting the Phibun regime and the Japanese.[6] The partisans provided espionage services to the Allies, performed some sabotage activities, and helped engineer Phibun's downfall in 1944. After the war, Thailand returned the annexed territories but received little punishment for its wartime role under Phibun. Thailand suffered around 5,569 military deaths during the war, almost entirely due to disease.

1.3 Time Zones

There is one time zone in Thailand. All of Thailand is on +7 UTC (one hour different from Malaysia!). There are no Daylight Savings Time clock changes.

1.4 Navigation and Charting

To understand Thai charts Ao = bay, Ko or Koh = island, Ban = village, Hin = danger. See list of Chinese words commonly used on Thai charts in the [appendix](#).

It is also worth noting that the letter "h" in words beginning with ph or th is not pronounced, ie Phang, as in Phang Nga Bay is pronounced "Pang" and the name might be written thus, Ao Phang Nga.

1.4.1 Sources for Satellite Charts (KAP and MBTiles)

In SE Asia, the go-to source for Satellite Charts and collection of anchorage waypoints has been Terry Sargent's website, yachtvalhalla.net. In early 2025, Terry shut down his website and suspended making updates, and a fellow yachtie offered to host his information.

You can find the latest version of Terry's extensive information set here:

<https://sailingamazinggrace.com/charts/terrys-topics>

There are a number of other sites with downloadable satellite chart sets for around the world. Here is the full list:

<http://svsoggypaws.com/SatCharts/> Many charts for crossing the Pacific, and the Red Sea. Some SE Asia charts. At the bottom, links to other chart sets.

[Zen Again's Charts](#) Pacific Ocean, SE Asia, Crossing to S Africa, S Atlantic, Brazil

[Ocelot's Charts](#) SE Asia, Western Pacific, and Indian Ocean

[Migration's Charts](#) Pacific Mexico, French Poly, Pitcairn Island, Easter Island mbtiles 2020

[Jacaranda's Charts](#) French Polynesia

[Amazing Grace's Charts](#) West Coast USA and Canada, California to Alaska. Some of the Mediterranean. New 2023-2024.

1.4.2 Sources for Satellite Charts Using a Tablet

If you MUST use a tablet, get a satellite charting package. The old recommended app was **Ovital Map**—this no longer works!

Android: You can use and install OpenCPN from the Google Play store. Make sure you get the paid (\$10) version. The free version is no longer updated.

For an alternative app, the consensus seems to be All-in-One-Offline-Maps, downloadable from the Play Store, here:

<https://play.google.com/store/apps/details?id=net.psyberia.offlinemaps>

iDevices: Guru Maps You get one free week and then can buy the Pro version for \$10 per year. Cheaper to start with the free version than buy the Pro outright, but I heard that maps downloaded for the free version have to be re-downloaded for the Pro version. You can add map types from here: <https://ms.gurumaps.app/>

Others have also recommended Alpine Quest and Zulu Offshore.

For both Android and iDevices, the **NoForeignLand** app is now (2025) very popular, has good satellite data, and TONS of anchorages and Points of Information relative to cruisers.

1.4.3 Why You Need Satellite Charts

(may not apply to Thailand)

Important warning: The **CM93 v2** charts (those “free” world charts that cruisers are using with Maxsea and OpenCPN) are NOTORIOUSLY inaccurate in Indonesia, and some major reefs are missing from the latest (2010 and 2011) versions. A 2005 or 2007 version of the CM93ed2 charts would be better to use than the newer version, if you are off the beaten path in Indonesia.

The latest **Garmin G2 Vision chart** (2016) is pretty good, but in some areas is still off enough to put you on a reef if you are not careful (Manokwari, Indonesia for one). We found these to be the most accurate charts we had in Indonesia, except the satellite charts. It is recommended that you have good satellite charts for every area, and navigate with your Mark I Eyeballs at all time.

With **GoogleEarth**, of course, there's always the problem certain areas with poor satellite pictures, poor sun angle, clouds hiding reefs, and low res pictures, so if you go off the beaten path in reefy areas, also have SAS Planet and download the ArcGIS, Nokia DG Sat, (maps.ovi.com), Bing and Yandex maps for those areas too. Often Google or SAS Planet will

have a different satellite pic (which one is better varies). SAS Planet is a little quirky, so take a little time to figure out how it works.

A good selection of pre-made satellite chartlets of anchorages in SE Asia can be downloaded from Terry Sargent's collection, here: <https://sailingamazinggrace.com/charts/terrys-topics>

Also look for his Thailand anchorage waypoints gpx file.

1.5 Weather In This Area

1.5.1 West Coast

John Batts Cruising Guide – 1994: Malacca Straits can be divided into four seasons:

1. NE Monsoon - November to March: This is the dry season; winds are predominately NE 10-20, occasionally 30k. There are frequent calms lasting from a few hours (evening and early morning) to whole days or few days' duration. Rain is very rare and the days are fine and relatively cool; the sun is furthest south at this time, only 60 degrees above the horizon in December. Very pleasant cruising weather. Because the wind is coming straight off the Malaysian peninsula, there is no swell and any seas that do come up during local strong winds drop quickly when the wind drops.

2. Transition Period - April and May: This is the height of the transition period between the NE and SW Monsoons and is marked by many calms, very light winds, and flat seas. When there is wind it can come from any direction and vary in strength and direction, but is not common from the E through to S or from N. There is the odd rain squall that can last from 5 minutes to an hour or 2, with winds sometimes up to 25k under them. Very little chance of a "sumatra" (see SW monsoon). Weather is hot and sultry.

3. SW Monsoon - June to September: This is the wet season. Hot sultry weather as the sun is in the North and the humidity is high. Winds are predominantly from SW 10-25, with frequent calms and frequent rain squalls. The squalls last from a few minutes to a few hours, but typically last for 15 minutes with very heavy rain and either no wind or, more frequently, winds up to 25k. These winds change strength and direction depending on your position relative to the center of the squall. Once it has passed over, the skies clear and the wind returns to what it was before the squall arrived. A squall can usually be seen well before it arrives as an isolated large, dark, towering cloud, and, should you be close to land, gives you plenty of time to either anchor or head for an open area before the heavy rain causes a complete whiteout. This is also the season for "sumatra" winds.

Sumatra winds are a different matter altogether. In the day they can be easily identified as a long rolling bank of very dark cloud extending roughly north-south from horizon to horizon and coming from the west, from Sumatra, thus their name. At night, when they are most common, the first warning is when they hit. They are most frequent in the South Malacca Straits, but do occur occasionally around Penang and Langkawi, and more rarely around Phuket. Typically there will be 2 to 4 during the season in Penang and 1 or 2 in Phuket. There is no avoiding the very strong winds up to 60k from the westerly quarter and very heavy rain. They can last for 5 or more hours, though more commonly last about 20 minutes to 1 hour, and then end as quickly as they began.

4. Transition period – October: same as April/May.

1.5.2 East Coast

1.5.3 Weather Sources

Climate Information: <https://www.tourismthailand.org/Plan-Your-Trip/Weather>

Thai Met Service: <https://www.tmd.go.th/en/>

Weather Radar: https://weather.tmd.go.th/pkt240_HQ_Loop_edit2.php

Color Satellite Photo of SE Asia:

<https://www.ospo.noaa.gov/products/imagery/nohemi.html>

(Look for the Tropical SE Asia Section)

Synoptic Chart: <https://www.tmd.go.th/en/supportData/synopticChartsEn>

1.6 Customs & Immigration



The Thai Flag.

1.6.1 The overall process

Here is the official list of approved yacht entry/exit ports:

Noonsite – Jan 2025: Yachts should anchor flying the Q flag. Customs very rarely visit yachts.

It is no longer compulsory to use an agent to check in to the country, now that Covid restrictions have been lifted.

However, as many forms are in Thai and in some places the officials only speak Thai, you might find it a lot easier to use an agent. However, in Chalong (Phuket), it is easy to do yourself.

Within 24 hours of arrival, except at weekends, the captain must go ashore to complete entry formalities.

Corruption among Thai Marine Officials does exist and can affect visiting cruising yachts. Expect clearance procedures to be inconsistent, as well as fees charged, from port to port.

Immigration, Customs and then the Port Authority (Harbormaster) must be visited. Be patient, clearance can take some time.

ALL crew must visit Immigration on arrival and departure to have their photographs taken (same procedure as at the airports).

If any crew onboard are planning on leaving the yacht by air at any time, paperwork is greatly simplified if they are recorded as passengers when checking in, not as skipper or crew. They can then come and go as they please. One person must be recorded as skipper, however, all others can be recorded as passengers. It is advisable for them to be noted as passengers on the zarpe from the previous port.

The alternative is to place a substantial cash bond before leaving the country (and before going to the airport). This is difficult to reclaim and if it has not been done you will be unable to board your flight and will be turned away. See Immigration for more details on placing a bond.

The other alternative is to change your status (see this report for details).

Since February 2014 the length of time visiting yachts are permitted to stay in the country is no longer tied to the length of the owner's visa. The initial time is now 6 months, with the ability to apply for an extension for another 6 months up to 2.5 years. See Customs.

This rule is not necessarily understood and practiced by all Customs offices.

The Port Authority will have online forms, in Thai, for you to complete. You will need someone with you that speaks Thai. See Documents for all the paperwork that will be needed for clearance.

It is mandatory for all incoming and out-going yachts to have AIS which must be on at all times. Failure to have an AIS transponder will result in a substantial fine.

WA Group – October 2024 – Krabi vs Phuket Checkin: What are people's experiences of checking into Krabi vs. Phuket please? We have checked into Phuket a couple of times before, but have family visiting Krabi in December so wondering if it's better to go straight there from Langkawi.

- Krabi will give you 30 days no extension for the Captain.

60 days with 30 day extension for crew/passenger. 30 months for vessel with customs. That's the law.

Phuket will do largely the same but may convert the captain to passenger for 1900 thb which gives captain 60 plus 30.

Note that turning up without a visa is "visa exempt" rather than visa on arrival. Great for tourists and passengers but less so for masters of vessels

Sail SE Asia - May 2024: The yacht is welcome in Thailand for 6 months. Then you need to renew her entry with Customs. Can be done in Krabi, Phuket and I just did it in Ranong - there may be other ports as well. Not difficult but fine of 1,000baht/day for going over (max 10,000).

1.6.2 Pre-Arrival (Visas, Cruising Permits, Insurance)

All arriving foreigners must submit a digital arrival card 3 days before arrival.

<https://tdac.immigration.go.th/arrival-card/#/home> This not a visa, but a notice of planned arrival. Make sure you are on THIS site. If you Google “Thai notice of arrival” or Thai TDAC, you are likely to land on a commercial site. There is NO CHARGE for the Notice of Arrival if done on the Thai government site!

1.6.2.1 Visas

The Thai e-visa site (see below link) has a tool to help you determine whether a visa is required in advance. Citizens of 93 countries are exempt from requiring a visa for stays up to 60 days. Check [here](#) to see if your country qualifies.

To be eligible for the visa exemption scheme, visitors must meet the following criteria:

- Hold citizenship from an approved country
- Hold a passport with at least 6 months of validity remaining
- Pledge to enter Thailand strictly for tourism purposes
- Provide verifiable proof of accommodation in Thailand such as a hotel or an apartment address
- Provide proof of funds to support their stay (minimum 10,000 THB for single travelers and 20,000 THB per family)
- Provide proof of a return ticket for exiting Thailand (open tickets do not qualify, and the ticket’s destination cannot be a neighboring country of Thailand)

Visitors may be asked to show their travel ticket upon entering Thailand. If they do not possess a ticket proving their exit from Thailand within 60 days of arrival, they will most likely be refused entry.

There is no set entry limit for visitors entering Thailand by air, but visitors who enter Thailand by land or sea border and hold normal (non-diplomatic) passports will be granted visa-free travel to Thailand only **twice per calendar year**. Malaysian citizens are exempt from this rule and can enter Thailand via land border an unlimited number of times.

January 2026: Immigration at Chalong has been routinely granting everyone on board, regardless of status, a 60 day stay permit. This is not the same in other ports on the west coast of Thailand. (see subsections on Koh Lipe and Krabi below)

If you arrive in Thailand on a boat and just do a “Visa on Arrival”, you may only get 30 days. If you apply ahead of time for a tourist visa, you can get a visa that gives you 60 days and is extendable for approx. another month.

e-Visas (Oct 2025): <https://www.thaievisa.go.th/>

Manual in English (pdf): <https://www.thaievisa.go.th/static/English-Manual.pdf>

Visa applicants are no longer required to submit passports and supporting documents in person at the Royal Thai Embassy/Consulate-General. It is important to note that you are only able to apply if you are currently not in Thailand.

After the e-Visa application has been approved, a confirmation e-mail will be sent to applicants, which can be printed out for presenting to airlines and Thai immigration officials when traveling to Thailand.

Recommended browsers to do the application are Chrome and Firefox (this is according to the evisa website itself).

Soggy Paws – Oct 2024: When I put in USA passport + Malaysia current location, it said "allowed". Also Australia, New Zealand, England, France. I didn't check any other countries.

If you cannot apply online, there is a Thai visa office in Penang. And there *may* be someone in Langkawi who will do it for you for a fee. The Penang consulate used to be inundated with Thai visa applications (pre-evisa), so they cut off accepting applications when a limit is reached, so get there early (recommend at least ½ hr before the office opens). They also do not accept applications after 10am. Processing time is one full working day (for example, submit Friday morning, get back Monday afternoon).

1.6.2.2 AIS

Sail SE Asia – July 2017 – AIS Requirement: I have been into the harbour master in Ao Chalong where I took photos of the new legislation regarding AIS as being mandatory on boats. I was wondering if things had tightened up in regards to them policing it and it seems they haven't. I asked if I didn't have an AIS could I still sign in their book stating that I am entering the country without one and they said yes you can, so I asked to see the book which they were happy to do so.

The AIS area is basically from Satun to Ranong Andaman Sea only, not the other gulf.

1.6.2.3 Insurance

Sail SE Asia – June 2023: I use Edward Williams. Just renewed last week. \$545 US dollars. It covers Thailand and Malaysia. You fill up the form online and get it in less than 24 hours...

<https://www.edwardwilliam.com/>

1.6.3 Pre-Arrival Notification

There is a new pre-arrival notification website for Thailand, it must be filled out no matter whether arriving by air or boat or bus/train.

<https://tdac.immigration.go.th/>

The Thailand Digital Arrival Card (TDAC) is an online form designed to replace the traditional paper-based arrival card and facilitate the entry process for travelers to Thailand, regardless of their mode of transportation via land, air, or sea. This system aims to strengthen security measures, streamline immigration procedures, and support public health management, ensuring a seamless experience for international visitors.

1.6.4 Immigration – Initial Check-In

1.6.4.1 Phuket

Sail SE Asia – Oct 2025: According to Thai Immigration regulations, the master of a vessel only gets 30 days non-extendable, while everyone else on the boat is listed as a passenger and gets 60 days + 30 days extension. If you check in at Chalong Pier Immigration at Phuket, the master can get the same 60 days visa as the passengers, as long as you ask for it, and the right person is helping you. If you fly in, no distinction of master and everyone gets 60 days.

Rumor has it that check-in in Krabi is by the book (ie, captain of the boat only gets 30 days).

Sail SE Asia – June 2024: Also if you check in with boat and want to fly out you need to leave 20,000bht deposit with immigration (downtown Phuket) before you fly.

Sail SE Asia – June 2023: If arriving in Phuket, you just drop anchor in Ao Chalong Bay and go to the building in the head of the pier. All you need is there located in the same place. They will take good care of you. If it's your first time arrival in Thailand, a lady will help you to organise all your papers, make copies if needed, and insert your boat data in the digital data base. This data will be sent to Harbour Master, Immigration and Customs. You will not need to fill up any forms. Only sign it. You will understand why they say that Thailand is the land of smiles.

In Krabi the offices are separate but people extremely friendly.

Remember that your AIS Transponder has to be ON all the time if the boat is in Thai waters and not in a Marina. They will check if it is transmitting as you are checking in.

Sail SE Asia – Feb 2023: We came from Langkawi. Stopped Koh Lipe, then Koh Rok & on the 3rd day (Sunday) arrived Chalong. It was after 3.30pm so office was closed enabling us to clear Monday with no problem.

They were lovely. They walked us to all 4 offices. We paid 500 Thai Baht to Harbor Master & 2000 Baht to Immigration.

1.6.4.2 Krabi

In Krabi the offices are separate but people extremely friendly.

Remember that your AIS Transponder has to be ON all the time if the boat is in Thai waters and not in a Marina. They will check if it is transmitting as you are checking in.

January 2025: We are at Krabi in Thailand and at the immigration office. Does anyone know if we go to customs or harbour master next?

- We went to customs then the harbor master

Sail SE Asia – December 2024: Krabi has consistently taken the letter of the law since the new laws came into effect about a year ago. Previously all entries without a tourist visa were granted 30 days visa exemption which is enough for the average holiday maker.

Thailand reviewed their visa laws early this year and increased the number of countries given visa exemptions and increased the exemption from 30 days to 60 days with opportunity to add another 30 days.

Skippers remained on the previous 30 days visa exemption. This anomaly was addressed by Phuket immigration some months ago and by Krabi immigration only in recent weeks. Krabi immigration are happy to do what they can but also must be seen to operate within the law. As I understand skippers can be reassigned as a passenger or a crew without too much trouble.

Remember that dozens of yachts come and go from Phuket but very few via Krabi so it takes longer to establish a new trend and the laws have been changing like crazy since Covid so it's difficult to stay on top of it.

Sail SE Asia – January 2025: At Krabi Immigration you can pay a fee to have Captain declared as passenger. This avoids the issue with the bond. If you already checked in... Then check your

arrival stamp. If you got only 30 days, you might have been stamped in as captain and the bond issue may apply.

1.6.4.3 Koh Lipe

Rebak WA Group – Nov 2025 – Yacht Checkin – Only 30 Days: Ko Lipe is in the province of Satun. The clearance port is Satun town. In the Tammalang river. That's the official clearance port.

Ko Lipe is a tourist island served by ferries from Langkawi. Tourists come from Langkawi and return there. There is a special arrangement to serve this market during the tourist season.

If you want to clear into Satun province, go to Tammalang. Then you are free to travel around Thailand. But you will only get 30 days. Not extendable. Same as Krabi. That's the law.

Phuket has somehow been able to circumvent this to the benefit of sailors. If you check in at Chalong in Phuket, most days, Captain and Crew and Passengers will get 60 days, extendable one time for another 30 days.

Rebak WA Group – Nov 2025: Just came over to Koh Lipe on the ferry and while at immigration I asked the in and out fees for yachts

In

Immigration 500 baht per person

Customs 900 baht

Harbour master 200 baht

Out

Immigration 500 baht per person

Customs 1100 baht

Harbour master 800 baht

Make sure if you do go through Koh Lipe, it is marked on your paperwork valid for all ports, and you do not have to check out at Koh Lipe but because Koh Lipe is not a full clearance port, when you clear in there you should ensure that your "Port Clearance" or "Port Movement Permit" lists all ports you plan to visit in Thailand.

Sail SE Asia – Nov 2024: I just came back from Koh Lipe, checking in 1200 bt. Checking out 1900 bt. For solo saling. Which makes to about 100 Euros.

1 month visa for captain, 2 months for crew.

In short very lengthy process and a real rip off.

WA Group – Nov 2024: The last time we cleared-in/out in Lipe April this year the cost was as follows:

08:30-16:00 Mon-Fri

Clear-In 1900TBH

Clear-out 2400TBH

Weekends or Public Holidays (of which there are many, best to google first!)

Clear-In 2400TBH

Clear-Out 3600TBH

We've used both Clearance/Immigration Points that are both on Pattaya Beach.....

One by the Ferry Arrival Jetty near to "Café Lipe"...great Thai and western Food and a beautiful setting.

The other is further along the Beach and the one with the Lady in the Cubicle that everyone has mentioned. Price the same at either.

Very simple process but you just have to wait a while and go back for your P/Ports if they're busy with the Ferry Pax.

Sail SE Asia – May 2024: Ko Lipe is not a clearance port. Satun is. It is the capital of Satun province. Ko Lipe has developed into a secondary clearance port in Satun province due to regular seasonal ferries from Langkawi, Malaysia.

Sail SE Asia – March 2024: International clearance at Koh Lipe is possible. Current costs are; immigration tbt 500pp, weekend charge tbt 130, customs tbt 1,500, port clearance tbt 800. Port clearance is only possible during the high season, when ferries are running to/from Langkawi, roughly mid October till mid May. Otherwise you have to go to Satun Town for the port clearance part.

You do not have to exit Thailand from the same port you entered. I believe this common misconception is a hangup from the old days when cruisers didn't follow the requirement to clear out/in between Thai provinces. Koh Lipe can't clear you out of Satun province if you haven't formally entered.

The whole process was pleasant with an abundance of smiling Thai officials and took just over an hour. Avoid the busy times when they're processing ferry passengers!

Sail SE Asia – July 2023: There is only Immigration on Koh Lipe—mainly there for ferry passengers from Langkawi. It MAY be possible to do your boat check in there. Apparently there are agents that take the documents to Satun for you, so it's possible to arrange in Lipe for a fee. Ask the speedboat operators. Otherwise you need to go to Satun yourself to do a complete check-in.

Sail SE Asia – Nov 2019 – Checking out at Koh Lipe: We just had a strange immigration experience checking out of Koh Lipe and wondered if it is normal.

We turned up to check out at 09.30. We waited in the short queue and were told at the window we would have to come back after 16.30 to check out and pay overtime.

We politely told the official this wouldn't work for us as we wanted to leave for Langkawi this morning. He told us to go and come back after 16.30! We told him we would stay there and wait.

After waiting around half an hour the official beckoned us over and said he would check us out now, but only as a favour for the children, not for my wife and myself.

He told us he would not get his overtime money as he was checking us out in working hours. We did offer to pay but payment was refused. Is this normal?

- Nothing has changed in the last 10 years. There are no problems to do Langkawi to Lipe to Langkawi. The problem is the papers in Lipe are NOT valid to sail OUT of the Butang

Archipelago . For that, you NEED to do a full Check In in Satun, Krabi or Phuket. Phuket is the easiest fast place.

1.6.4.4 Satun

Sail SE Asia – Nov 2022: Remember that if you check in in Satun you will have to check out of Satun in order to be able to check in in Phuket or Krabi. I will sail to Langkawi next week from Chalong, Phuket taking about one week to get there. I will stop in Koh Lanta, Koh Muk and Tarutao on the way down. On the return trip, I will stop in the Butang but maybe avoid Lipe because I don't want trouble if I get caught ashore by immigration. But I will stop at Koh Rawi, Rok Nok and Phi Phi on the way back to Chalong and will do my check in in Chalong. There is a slight risk when you do this but only if you get ashore for anything other than a medical emergency. One guy got a fish hook through his hand and went to the clinic ashore in Koh Lipe to get the hook removed. He didn't have any problem with immigration because of this. I don't recommend Satun if you can avoid it. You can enjoy a leisurely cruise through the Thai islands for about a week going each way without raising eye brows. We have been doing this for almost 16 years every year.

The only time I had trouble was because I cleared immigration in Koh Lipe and cleared the boat in in Chalong a few days later. I got yelled at about this at the Phuket Airport when I flew out of Thailand a few days later. It's true that the reason that I checked in in Koh Lipe was because I knew that Chalong immigration would be closed for Chinese New Years and I needed a stamp in my passport so I could fly out of Thailand to go back to work. I left my boat papers with my wife and she had to clear the boat into Thailand after I left the country and she was not even on that voyage to Langkawi with me. Being a Thai citizen there was no problem for her. But I really got chewed out at the airport!

1.6.4.5 Pattaya

Sail SE Asia – November 2024: We are about to pay 19450 Bhat just to check out at Pattaya. 41' boat two persons onboard.

The high fees for check out are the bane of visiting sailors, and difficult to avoid. Samui is the same, and I understand Racer also the same. Basically 20,000 baht, give or take a few hundred whether you are checking out domestically or internationally.

A shame as it is a disincentive to visit what is an attractive cruising area.

Songbird – March 2017 – Clearing In at Pattaya: Clearing In and Out of Thailand in Pattaya is quite a challenge. They are not used to yachts here. You can use an agent to assist, but they are quite expensive, so we did it ourselves. Hired a motorbike, rode to the other side of the main town and finally found the Marine Office (Harbour Master), only to be told that it has to be done online. Tried to do this, but it is all in Thai, so had to find someone fluent in Thai to assist us.

Immigration office is in the main town. We were there first thing in the morning with the right paperwork, but got charged a fee, plus an Overtime fee (9am in the morning!!). Then to Customs which is at the airport, 50km south of Pattaya. No one spoke English, but they were very helpful and friendly. Whole process took 2 days!

Clearing out, was similar. Harbour Master stuff done online but still need to go to their office and pay a fee. (200Baht, but fee varies daily).

1.6.5 Immigration – Extending Visas

Soggy Paws - Feb 2024: After your initial 30 or 60 days granted on arrival, you can extend for another 30 days. (except if you check in somewhere other than Phuket?).

From an online Google: To apply for a visa extension in Thailand, you'll need to visit the local immigration office, complete the necessary forms (like TM7), gather required documents (passport, photos, etc.), pay the fee (1,900 Baht), and submit your application.

Here's a more detailed breakdown:

1. Gather Necessary Documents:

- **Your passport:** Ensure it's valid for at least six months beyond your intended stay.
- **Completed application form (TM7):** You can obtain this form at the immigration office or the information desk upon arrival.
- **Passport photos:** You'll need one passport-sized photo (3.5 cm x 4.5 cm).
- **Photocopies:** Prepare photocopies of the main page of your passport and the page showing your current visa stamp.
- **TM30 registration:** Your accommodation is required to register you online with Thai Immigration (TM30). Ask the staff/owner to print proof of registration.
- **Confirmation of accommodation booking (optional):** While not always required, it's a good idea to have this ready.

2. Visit the Immigration Office:

- **Arrive early:** To avoid long queues, it's advisable to arrive early in the morning.
- **Submit your documents:** Present your completed TM7 form and all required documents to the immigration officer.
- **Pay the fee:** The extension fee is 1,900 Thai Baht, payable in cash.
- **Processing time:** Extensions are usually processed on the same day, often within a few hours.

3. Important Notes:

- **Tourist Visa Extension:** If you are on a tourist visa, you can extend it for a period not exceeding 30 days.
- **Dress conservatively:** Some offices frown on bare shoulders and bare knees and flip flops.

The downtown Phuket Immigration office ([Location](#)) is always very full. But they conveniently have steps away, a copy center and one that will take your photo for the required photo.

People often recommend going to the Blue Tree Immigration office ([Location](#)) as it is less crowded.

Phuket Immigration Website: <http://www.phuketimmigration.go.th>

Generally, the offices are open weekdays 8:30am to 4:30pm and closed from 12-1pm, non-holidays. See national holidays [here](#).

1.6.6 Immigration – Leaving your Boat

Wild Fox – 2018 (copied from Noonsite.com): If you intend to leave Thailand without your boat, ie foreign travel, you need to be careful. If anyone checks in as either captain or crew then complications arise. If you check in as a passenger then you may come and go as you please.

The acid test of a passenger is that you will have a standard departure card stapled into your passport and life is simple. Some yachts have suggested that it is possible for everyone to check in as a passenger but this is unconfirmed, however, due to the Thai inconsistencies it may on occasions be possible. Ask, it is worth a try!

If you are either captain or crew you will have an A4 piece of paper folded into your passport. If, in advance of your arrival, you have obtained a 60-day visa (extendable by another 30 days) then when you arrive you will get a stamp WD30 and no A4 paper. That stamp means you are good to go but if you have the A4 paper then you must either pay a bond or change your status.

Paying A Bond

Go to Immigration in Phuket. Google maps find it as Phuket Immigration. There is a window making photocopies (easier to make them in advance).

Next to it is the office for visa extensions (sometimes very crowded).

Next to this is an office marked Vessel Control (until recently this office had no sign on it).

The staff inside vary. The young lady I dealt with could not have been nicer nor more helpful. But I have heard different reports.

When the transaction is complete you will have a different piece of paper in your passport. This should be removed by Immigration at your departure airport. If it is not removed by them you may have trouble in recovering your bond as they have to send this back to Phuket.

Basically, you pay a bond of 20,000 BHT (in cash only) which is returned when you come back into the country but you have to go back to Immigration, get a cheque and then take this to Immigration's bank and change it for cash (less a fee of 500BHT). A lot of hassle.

It is much simpler to change your status.

Changing your Status

In the same Vessel Control office, change your status to passenger. Pay a one-off non-returnable fee of 2,000BHT. You will need a copy of your ticket out of the country and a copy of your passport. The clerical process involves about 15 minutes. (My helper used rubber stamps 17 times).

Some people think that this 2,000BHT fee is a bribe, but this is an official process.

You will end up with a standard departure card and a new piece of paper in your passport which will be removed by Immigration at your departure airport.

THIS NEXT BIT IS VERY IMPORTANT AND FREQUENTLY OVERLOOKED

When you return to Thailand you must go back to Vessel Control and have your status returned to either captain or crew as you will have re-entered Thailand as a tourist. And a tourist cannot work on a boat either paid or unpaid (work can involve as little as hosing down the decks).

1.6.7 Customs

Posted at Chalong Customs January 2026 -->

Sail SE Asia – Oct 2024 – Extending Your 6 Months: Go to the Customs house in Phuket town, it's just up the road from Immigration. Have copy of passport, visa and boat registration, plus a map showing where the boat is moored. Make sure you do it at least 15 days before it expires or they will

Customs Procedures
for a temporary import pleasure craft and sport vessel

Arrival Document to submit		Departure Document to submit	
Document	Original	Document	Original
Ship Inward Report [form 272] <small>*available at Customs House*</small>	1	Simplified Customs Declaration	1
Vessel Registration Certificate	1	Ship Outward Report [form 373] <small>*available at Customs House*</small>	1
passport	1	Declaration for Ship Outward	1
Clearance Outwards from Last Port	1	Passport	1
Photo of the ship that the name of the ship is clearly seen	1	Port Clearance	1
Ship owner's power of attorney of master <small>If the ship owner can not present himself/ herself at Thai Customs</small>	1	Ship owner's power of attorney of master <small>If the ship owner can not present himself/ herself at Thai Customs</small>	1

Document	Original	Copy
Application for a renewal of guarantee agreement	1	-
Simplified Customs Declaration	1	-
Vessel Registration Certificate	-	1
Passport with stamp page of arrival and departure from Thailand	1	-
Ship owner's power of attorney to master <small>If the ship owner cannot present himself/ herself at Thai Customs</small>	1	-
Other Document such as <ul style="list-style-type: none"> Certificate of vessel repair Certificate of vessel anchoring from marina The map of vessel anchoring <small>(In case of vessel does not anchored in the marina)</small> Photo of ship that the name of the ship is clearly seen 	1	-

Document to Receive → **Simplified Customs Declaration**
(with stamp extension)

Extension
At Phuket Customs House [Phuket Town]

A request for an extension period shall not exceed **2 years and 6 months** from the date of importation

Document to Receive

Clearance Outward [form 373]
available at Customs House

If does not re-export vessel when the term prescribed in a agreement is expired
The Customs shall fine a vessel at daily rate of **1,000 THB** from expiration date but not exceeding **10,000 THB**

fine you 1000baht.

Noonsite – May 2021: Thai legislation now states that a vessel entering Thailand may stay for up to 2.5 years.

On arrival, a 6-month stay will be granted, the remaining 1.5 years can be applied for as extensions. Simply wanting to stay in Thailand as a tourist is reason enough.

Applications for extensions should be submitted within 30

days before expiry but no later than 5 working days to expiry. A photo of the boat showing its name clearly displayed is required, along with photocopies of your visa and passport.

The Thai Yachting Business Association (TYBA) provide a simple infographic for easy reference. See next page.

The fine for overstaying is 1,000 baht per day of overstay with a maximum of 10,000 baht.

PROCEDURES FOR TEMPORARY IMPORTATION OF PLEASURE CRAFT INTO THAILAND AND EXTENSION FOR UP TO 2.5 YEARS STAY



The term "Pleasure/Sport Craft" refers to vessels used solely for pleasure or sports, hereinafter referred to as a 'Yacht'. This excludes vessels imported for commercial use unless it has received special permission under the Thai Vessel Act.



How to apply

Applications must be done upon arrival by a person traveling on board the vessel, they must be the yacht owner or someone who has received authorisation to act on the owner's behalf by power of attorney. This person shall hereinafter be referred to as "The Importer".

Arrival clearance

The Importer must declare their arrival to the Customs office within 24 hours of arrival.

Documents Required - original + 1 copy

- Latest port clearance
- Registration and AIS certificate
- Passport of importer, crew and passengers
- If owner is not on board:*
- Identification papers of owner
- Authorisation letter from owner

Document Received



- Simplified customs declaration form
- General declaration form

Guarantee

The Importer must sign a guarantee (self cash, bank or personal), equivalent to the value of the vessel plus all duty and taxes applicable.

Failure to re-export within expiry date of stay

Should the yacht overstay, a fine of 1,000 Baht per day is payable, the fine shall not exceed 10,000 Baht in total. If it is deemed that the yacht overstayed intentionally, the customs office may enforce the full amount of the guarantee and/or confiscate the vessel.

Extension of Temporary Importation for up to 2.5 years

The Importer must report the stay of the yacht at the customs office of its arrival, not more than 1 month before the expiry date of their stay.

Extension application must be submitted at the customs office the yacht's arrival no later than 5 working days before the expiry date of their stay.

Documents Required - original + 1 copy

- Simplified Customs Declaration Form
- Registration Certification
- Application for Extension
- Passport of the Importer
- Authorization Letter from vessel owner
- Identification papers of vessel owner
- Other document certifying the yacht's location

Departure clearance

The Importer should submit a Declaration for Ships Outwards form to the Customs officers at the port of exit

Documents Required - original + 1 copy

- General Declaration form
- Simplified Customs Declaration Form
- Registration Certificate
- Passport of importer, crew and passengers
- Authorization Letter from vessel owner
- Identification papers of vessel owner

Document Received



- Outward clearance form

1.6.8 Health / Quarantine

There is apparently no health/quarantine stop for clearance in Phuket.

1.6.9 Port Authority / Harbormaster

This is a required stop. First step in Chalong...

1.6.10 Stopping at Places Before Officially Clearing In

Sail SE Asia – 2023: Apparently it is quite common to check out of Langkawi and cruise all the way to Phuket before checking in. I am told that as long as you check in within 10 days of your checkout in Langkawi, nobody raises an eyebrow.

1.6.11 Pets

Soggy Paws – December 2023: We entered with a cat at Chalong. Nobody cared.

1.6.12 Port Clearances Between Ports in Thailand

Noonsite – Oct 2022: Officially yachts must complete domestic/ inter provincial clearance formalities with the Harbor Master in each province, or risk being fined. You will need to complete an official onward port clearance which has to be handed to the Harbor Master prior to departure and to the Harbor Master in the next province on arrival. There is no fee for this clearance.

This official rule of domestic clearance has been in place for a long time, but was applied by few ports. However, this is starting to change and Krabi Harbor officials are now fining yachts that have not checked into the province from their previous Thailand port (5,000B).

The cumbersome paperwork needed to complete this domestic clearance can easily be avoided by using an agent who can do everything online (which a private individual cannot do). The authorized agents are Seal Superyachts, Asia Pacific Superyachts and Porntip Logistics. Fees are approximately BHT 1500 (35 pounds sterling)

Phang Nga province has been enforcing this rule for some time, the problem there being that the office to report to is in Phang Nga Town, many km from the anchorages by road transport.

All Thailand provinces can apply this rule if they want to, so it's recommended to get domestic clearance when moving between provinces to be on the safe side.

1.6.13 Checking Out

Exit Strategy – Feb 2026 – Koh Chang (Domestic): Just did the domestic checkout (which is a requirement nowadays in Thailand) with our ship in Koh Chang.

Maritime Department: did it online and called the harbour master of Laemn Gob. Very soon later the application was approved. Needed to pay THB20 online and the portclearance was available.

Today morning even the harbour master called me in person and asked whether all was done alright yesterday by his staff!

Other step was immigration in Koh Chang. As always, very friendly and helpful, even when the procedure for our request was quite unknown by the officers. They tried and did it well. Even offered us coffee and all the process was like sitting with aunty and uncle. Had to pay THB 410 for the checkout.

I like how the authorities are working there. Nice, friendly, helpful.

Please consider when you need anything from that places, don't disturb the hospitality of those officers by any rough behaviour. Keep and protect this friendly community around Koh Chang. They are a good role model for many other places in this world.

Soggy Paws – January 2024 – Chalong: Chalong, the one-stop place to clear in and out around Phuket, was easy. Our boat was actually anchored in Nai Harn Bay and we took a taxi in to clear out. They didn't seem to mind but did insist that all crew be present to clear out.

At Immigration each person was photographed and fingerprinted both clearing in and out.

Songbird – March 2017 – Pattaya: Clearing out, was similar to clearing in. Harbour Master stuff done online but still need to go to their office and pay a fee. (200Baht, but fee varies daily).

1.7 Local Information and Customs

1.7.1 Public Holidays 2026

Date	Name	Type
Jan 1	Thursday New Year's Day	National Holiday
Jan 2	Friday New Year Special Holiday	National Holiday
Jan 10	Saturday National Children's Day	Observance
Jan 16	Friday Teachers' Day	Observance
Feb 14	Saturday Valentine's Day	Observance
Feb 17	Tuesday Chinese New Year's Day	Observance
Feb 18	Wednesday Second Day of Chinese New Year	Observance
Feb 19	Thursday Third Day of Chinese New Year	Observance
Mar 3	Tuesday Makha Bucha	National Holiday
Mar 20	Friday March Equinox	Season
Apr 6	Monday Chakri Day	National Holiday
Apr 13	Monday Songkran	National Holiday
Apr 14	Tuesday Songkran Holiday	National Holiday
Apr 15	Wednesday Songkran Holiday	National Holiday
May 1	Friday Labor Day	National Holiday
May 4	Monday Coronation Day	National Holiday
May 11	Monday Royal Ploughing Ceremony Day	Government Holiday
May 31	Sunday Visakha Bucha	National Holiday
Jun 1	Monday Day off for Visakha Bucha	National Holiday
Jun 3	Wednesday Queen Suthida's Birthday	National Holiday
Jun 21	Sunday June Solstice	Season
Jul 28	Tuesday King Vajiralongkorn's Birthday	National Holiday

Jul 29	Wednesday	Asalha Bucha	National Holiday
Aug 12	Wednesday	The Queen Mother's Birthday	National Holiday
Sep 23	Wednesday	September Equinox	Season
Sep 24	Thursday	Mahidol Day	Observance
Oct 13	Tuesday	Anniversary of the Death of King Bhumibol	National Holiday
Oct 23	Friday	Chulalongkorn Day	National Holiday
Oct 31	Saturday	Halloween	Observance
Dec 5	Saturday	King Bhumibol's Birthday	National Holiday
Dec 7	Monday	King Bhumibol's Birthday observed	National Holiday
Dec 10	Thursday	Constitution Day	National Holiday
Dec 22	Tuesday	December Solstice	Season
Dec 24	Thursday	Christmas Eve	Observance
Dec 25	Friday	Christmas Day	Observance
Dec 31	Thursday	New Year's Eve	National Holiday

Source: <https://www.timeanddate.com/holidays/thailand/2026>

1.7.2 The Language Factor

A good place to learn the basics is here:

https://en.wikivoyage.org/wiki/Thai_phrasebook

But better to learn the basics by hearing them vs the written interpretation of Thai.

Thai is a difficult language to master, because the same word can be pronounced with slightly different intonation, and mean a completely different thing. For example: When you're asking whether somewhere is far, the answers near/far are almost the same, but the tones are different. Klai means it's far, and Klâi means it's near, but people usually answer Mâi Klai (not far) instead. This is quite a difficult thing for travelers' ears.

To understand the marine terms shown on a typical chart, see the [Appendix](#) about language.

1.7.3 The Religion Factor

1.7.4 Getting Around in Thailand

In Phuket, Grab works fine. In 2024, a new ride sharing company called Bolt was operating. They were a little cheaper than Grab.

1.7.4.1 Car Rental Phuket/Chalong Area

- Nina's cars. About 20 minute walk from Chalong pier. Up to roundabout and turn left on Rawi road. Opposite Macro. Nina's Cars 089 648 0499 <https://q.co/kgs/e81nC4f>
<https://ninascar.com/en/>

- We used car rental place located beside the big roundabout about 15min walk from the pier. Cross the road to the RHS of the roundabout, office is on the corner. We paid 800 baht per 24 hrs for a good car.
- Mrs Quan - +66 81 597 68 85. <https://maps.app.goo.gl/JvxTJifHnQPMphN87>
- Best would be by scooter. Anchor in Kao Khad (east side of Chalong) and rent a scooter from there. If car is your preferred, prepare for traffic
- Another option is Ao Yon Beach (east side of Chalong); they also have a new car, so you can leave the tender on the beach. If you have a lot of shopping or provisions. You can park really close, this is an easy option, but the car hire costs a bit more, but the convenience is worth it. (Google Arreya Motorbike)

1.7.4.2 Car Rental Yacht Haven Area

Nov 2024 – Chamil House – Really close to the marina and 800 Baht per day. +66 86 947 7045

We use Paitoon car rental 1,000B per day Cheh 093-754-935

1.7.4.3 Car Rental Ao Po Marina Area

Nov 2024: This is who we use, good new cars, great A/C +66 89 203 2769, they will meet you at the marina also.

1.7.4.4 Car Rental Nai Harn Area

Nov 2024: TipTop car rental at Nai Harn will deliver the rental car at Nai Harn On the Rocks . Contact +66 635491653

Jan 2024 – Car with Driver: Mr Tony lives in the Nai Harn area, speaks a little English, has a small 6 seat car. Cell +66 92 719 5224

1.7.5 Leaving a Clean Wake

Remember that everything you do as a “yachtie” in Thailand will set expectations among the population for cruisers who follow behind you, for years to come.

Unless you want this remote paradise to turn into another tourist destination where the kids follow you around with their hands out, think carefully before you are too generous. It’s always better to “trade” than to just “give”. This gives the local population their respect, and keeps you from setting unrealistic expectations, which will weigh on the next yachtie to pull into the anchorage, who may not be able to be as generous as you are.

Sail SE Asia – Sep 2023: Just some general recommendations after living for over 15 years in Thailand and spending a significant time sailing in the Thailand as well.

1) I would strongly recommend not leaving your dinghy anywhere in Thailand on the beach without talking first to the locals. If the locals demands money for parking your dinghy pay them on that day and then land on a different spot the next time you come ashore.

2) Remember any argument with locals you will always loose in Thailand.

- 3) Thai people do not take kindly to any form of criticism specially from foreigners so act the Thai way which is to simply to not come back to the place/ people who did not treat you as expected and move on to people who hopefully treat you better.
- 4) Thailand has very strict defamation law so never post any bad review or comment about anyone and specially any company online.
- 5) General rule in Thailand and many other countries in Asia is that the % of bad people increase exponentially as you get into the more touristic areas. Stay away from those areas and your trip in Thailand will be an amazing experience.

1.8 Yachtsmen's Services - Overview

1.8.1 Money – Non-Cash

Foreign credit cards worked in most places in Thailand.

Soggy Paws – 2023 – Non-cash, non-credit transactions: Since our first forays into SE Asia, in places that don't accept credit cards, I've discovered Wise. Wise is a banking service based in the UK that makes international money transfers very easy.

In some countries, if you look for the e-wallet tab, Wise also support transferring to that country's most popular e-wallet (like GCash in Philippines, and Grab in Indonesia and Malaysia, and TouchnGo in Malaysia). These e-wallets usually make it easy to pay for local payments like phone top-ups and payments on Lazada and other shopping websites, without having to expose your credit card, or go to 7-11 and make a cash transaction.

Check out what they have to offer here: [Wise Money Transfer](#)

1.8.2 Money – Cash and ATMs

The official currency of Thailand is the Thai Baht. In January 2026, the exchange rate was approximately 30-31 Baht to USD.

Sail SE Asia – Feb 2023 – Changing Money: A timely warning to be observant and beware of money changer booths in Phuket. I was in Chalong a week ago to exchange US and Singapore currency. The attendant systematically counted and recounted the notes and checked them. Took a long time. Then he took a long time counting out the Baht. Keeps me waiting. He thought I would just rush off, having been there so long standing in the sun and possibly being a silly old fool of 68 and "Farang". End of the story is that I counted the notes in front of him and there was 5,000B missing from the 100,000B to be paid.

Now 1 note missing I could believe was a mistake – but not 5! He calmly counted again and took another 5,000B out and of his drawer and showed the 5 clearly fanned out in his hand. No emotion, no I am sorry. A true professional thief operating a money exchange booth.

1.8.3 Diesel and Gasoline

Mar 2026: Yacht Haven Marina: prices from Jan - March 2026: diesel Baht 50.13/litre; gasoline (95 octane) Baht 37.37/litre

Rebak WA Group – Mar 2025 – Fuel at Thap Lamu: I took 400 liters at Thap Lamu last year. Is a bit funny with a 20 meter long hoose without nozzle. Best would be mid end morning.

Afternoon was closed til 1600. And then the Tourist boats came to the Dock to refuel and unload.

Fuel at Port Takola: Fuel at Port Takola was clean and good.

Al Qamar – April 2024 - Phuket: For gasoline, any service station. The price will vary a little, but it's the same fuel. If for an outboard get 95 octane, preferably not with ethanol unless you know your engine is ok with that.

There's petrol on the end of Chalong jetty, and maybe other places on the water, but I don't know prices.

Other responses:

- We bought Petrol and diesel from the pier at Chalong. Prices were the same as the pump in town. They have water too, but we never used it so cannot comment. On our way back, we used the pink bus, but you need to pay THB10 per person. Nothing especially if you return with lots of groceries.

- In Chalong Bay, across the harbor at Ao Yon, there is a 7/11 where we were at anchor. Interesting little shops and it leads to Ao Yon where you can anchor as well. There are however no big shops at Ao Yon.

Soggy Paws – January 2024: There are several places we found to get diesel in Phuket

- At the Chalong Pier, wait until mid-morning when the tour boats have left. Both diesel and gas available. You can bring the big boat alongside or take a dinghy with jugs alongside.
- At Yacht Haven Marina, they have a nice diesel and gas pump where you can bring the boat alongside. Pricey though.
- Next to Yacht Haven, the guy who runs the Coconut Moorings on the N side of Yacht Haven, will bring a boat alongside and pump into your tank. He says he's much cheaper than Yacht Haven and has good fuel. David +66 937-499-092

1.8.4 Propane (Cooking Gas) LPG

1.8.4.1 Boat Lagoon

Sail SE Asia - May 2022: Go to the gas plant. It's just north of Boat Lagoon, on the opposite side of the highway (next to a car dealership?). It's a tiny little track (or was in 2014) for a while & then opens up to the factory. They can do US/Oz/NZ reverse-thread fittings there as well.

[PTT LPG Factory](#)

2017: We have used Yacht Haven Marina and also have had ours filled at Boat Lagoon Marina. Ask at AME marine and enjoy wandering round this great chandlery.

1.8.4.2 Yacht Haven

2017: We have used Yacht Haven Marina and also have had ours filled at Boat Lagoon Marina. Ask at AME marine and enjoy wandering round this great chandlery.

1.8.4.3 Krabi

2017: We took our bottles to the gas shop opposite the airport in Krabi. No problems whatsoever. Good service. Need car though. They use the same fittings as in Australia, unlike Malaysia.

1.8.4.4 Chalong Bay

January 2024: Not too far from Chalong <https://maps.app.goo.gl/yp3UmNmh2zHUVys76>

Sail SE Asia – Sep 2023: For anyone interested in getting their Aus bottles filled near Chalong Bay, they will do 9kg for 400 baht across the road from Mr DIY about 5km South of the pier. Easy scooter ride.

Sail SE Asia - May 2022: Go to the gas plant. It's just north of Boat Lagoon, on the opposite side of the highway (next to a car dealership?). It's a tiny little track (or was in 2014) for a while & then opens up to the factory. They can do US/Oz/NZ reverse-thread fittings there as well.

PTT LPG Factory

+66 98 531 1315

<https://maps.app.goo.gl/JRjEXSCCX37Cswue8> .

1.8.4.5 Ao Po

January 2024: This is down a bit from Ao Po but will fill any bottle, & cheap.

https://maps.app.goo.gl/9JB7txVJ4hX4oktv9?q_st=iw

1.8.5 Groceries

Mar 2026: Makro is indeed very much like Costco - a warehouse feeling. But we did not need a membership (Mar 2026), but had to pay cash or e-Wallet/QR, no credit cards accepted.

Soggy Paws – Feb 2024: In my opinion, the best grocery store for a major provisioning is the big Makro. You have to buy a “membership” kind of like Costco, but they had the best selection and pretty good prices. And good veggies, fresh meat and fish, liquor and a bakery. Google Makro Phuket. Across the major roadway from this Makro is Big C Supercenter, which is a small mall with a grocery store (and a laundry facility). There is a pedestrian walkover between the two stores, but because of traffic, it takes about a half hour in a car to get between one and the other.

In the Chalong area, there is another Makro, but we haven't been there (Google Makro Rawai).

Also in Chalong is a nice upscale store (Villa Market) that caters to foreign tastes, with a deli, and many brand name foreign goods we hadn't seen in a long time. About a 10 minute walk from Chalong and easy to get a Grab or Taxi back to the pier.

<https://maps.app.goo.gl/DPgXCWRRmGE1dNEi9> Also next to this store is a big housewares/hardware store named HomePro.

Al Qamar – April 2024 – Groceries Phuket: Big C is pretty good all round. Makro is a little more European, but a bit quirky (light on shampoo for some reason). Supercheap is... super cheap but maybe a bit down market. Lotus is somewhere in the middle of all that. There's others. Maybe the closest of the big ones is best.

Other responses:

- Easiest would be Boat Lagoon on-site groceries on the high end. Yacht haven is more of a drive but about a half hour to cheaper groceries.
- If you go to Makro near Yacht haven be prepared to pay cash.
- From Chalong, Makro is about 1km away from the jetty, Villa Market about 600m, Supercheap about 500m
- I found it easier to anchor off Chalong pier and then take a Grab. Getting into both Boat Lagoon and Royal Phuket is difficult and can only be done at high tide.

Villa Market is fabulous, expensive but if you want those imported items, it is there. There are two locations. I had no issues with cc's one is in Boat Lagoon the other on the main road closer to old Phuket town.

- At Makro, there's a whole bank of ATM just inside the entrance. Makro is best overall for sure. Unless you need some specific euro type produce then Tops or Villa Market.

- For wine you can't beat Wine Pro, get beer at Supercheap--any of the 24hrs ones, also great for everyday household stuff

1.8.6 Water

July 2024 – Chalong: You can get water on the Pier at the Fuel pump... Very Busy.

There is also a water station west of the pier. Is a small floating house, yellow and red with car tires around it. They have moorings for a stern rope. No one uses them. You just go down the wind/currents side and pass him a bow rope. They will pass a very long hose...big and strong pressure. Ask then to calibrate the pressure the way you want--take care to not explode your tanks. The meter the water you use and have a long bamboo pole with a net to pass you the bill. You then put the money inside for them. It is very cheap. I got around 360 liters and charged me 160 Baht (about \$4 USD). Better to go mid morning after all the local boats are out of the harbor.

I have never gotten bad water.... I do have a clear filter case and never notice anything bad in it. I don't know if the water is from the city pipe or not. Could be that it was dry season and they was pumping from the botton of a well or something. All the live on board charter boats get water there... The Fuel Blue boat also gets the water he sells there.

Note: This is NOT Drinking water. No water in Thailand is good for drink... You need a good filters system to drink it. In Phuket it is very bad because a big part of the water come from old Tin Mines.

Koh Adang has the magic water around here.

1.8.7 Boat Parts & Repairs

Mar 2026: It is with pleasure that I give credit where it is sorely due. If you need a good diesel engine mechanic in or near Phuket, you can do no better than Jeffrey, an American expat based in Phuket. (WA +1 (206) 954-3772). He is reliable, experienced, communicates well, and from what I hear, charges reasonably. I can't say from experience because he wouldn't let me pay him for more than two hours over the course of three days patiently explaining how to get water

out of my engine (parts where it doesn't belong) while stranded at Koh Phi Phi. He walked me through everything, and offered to come to the boat if we couldn't resolve the problem via internet. He will also come down to Langkawi if needed. He's a real pro in a part of the world where they are few and far between!

Soggy Paws – Feb 2024: There are a number of good chandleries in Phuket:

East Marine Asia (Boat Lagoon)

AME Marine (Boat Lagoon)

Keehin (Mid Phuket Somewhere) – A very large “Home Depot” type place with also a chandlery inside.

Wayne's World – A used boat parts place near Boat Lagoon. Has a LARGE array of second hand boat parts (salvage stuff, mainly). However the owner values his junk much too high. Every time we found something there and priced a new one instead, we opted to pay just a little bit more for new, or go without. Would do SO much more business if prices were compatible with use boat junk prices.

See the Phuket section for more.

Noonsite – Oct 2021 - Spare Parts: Yacht parts duty varies depending on the item. A solar panel, for example, is exempt of duty, alloy and many other items are at 5%, and others at 10%. Sails, however, are 40% and things with high plastic content.

VAT at 7% applies to everything imported.

Make sure that the document/invoice accompanying the item has a freight charge on it. Without a freight charge marked on the invoice, Customs will work out a percentage for freight and add it on before they work out the duty, and after that, they apply the 7% VAT. In this case, the duty demanded by Customs will be high.

If you do your homework, you can save money on importing parts. If you don't, however, understand the rules as it is highly likely you will be charged with a high duty charge.

1.8.7.1 Boat Parts

March 2024 – Boat Parts around Phuket: Options on boat parts is more spread out than Langkawi, but greater choice in Phuket. Keehin is probably the closest to Gans—a hardware store with a marine section.

The epicenter is Boat Lagoon, where a large number of service providers are. There are two chandleries (East Marine Asia and AME), and another just over the road (Surapol).

Rolly Tasker also has a decent chandlery.

There are others around too, including G&T and Yacht Haven.

Also nearby Boat Lagoon is Wayne's World, a used boat parts store.

1.8.7.2 Electronics

Mar 2026: Highly recommend Octopus Asia, especially for Victron and Raymarine equipment. Contact Hanspeter Fluder e: service@octopusasia.com p: +6676600143 / +66 6-1173-0916
mob

Recommend Mr. See of See Marine +66.85.069.4397 - we used him to fix our generator AC output issues.

Andaman Electrical Marine (AEM, not AME) - they come recommended, especially for work in Ao Po area. Contact Somsak +66.86.554.1441 or Tui +66.89.723.9555

aem.andaman@gmail.com www.andaman-electricalmarine.com

AME - come highly recommended. Owner is Kuhn Wiwat +66.81-536-8188

June 2024: Authorized B&G dealer - Electrical Marine Co, Ltd

223 Moo 8, Tumbon Paklok,

Thalang District,

Phuket 83110 .

Tel/Fax: 66 76 510 782

www.electrical-marine.com

email: sales@electrical-marine.com

Sail SE Asia – Nov 2023: We started having problems with our F & P generator after we left Pangkor. Couldn't find anyone until we made it to Phuket. We asked **Octopus Marine** to have a look at it and they said we need a new inverter that will cost us 150,000 THB.

We then took our inverter next door to Cirrus Marine (distributors of F & P). These technicians were highly qualified, had a look at it and said that we only need a new PCB board to be replaced at a cost of 30,000 THB

We also had them doing a full service on our generator and it's a relief to have it working fine now.

I strongly recommend **Cirrus Marine**.

1.8.7.3 Canvas & Sail Repair

April 2025 – Phuket WA Group – Canvas Work: Muzza Nordstand at Canvas Creations, Boat Lagoon, but will visit other marinas. Nice guy with great ideas. Gives a quote first. You won't get better. +66 62 220 9117 Whatsapp.

March 2025 – Phuket WA Group – Rolly Tasker: Mikael Pophillat, Mikael@rollytasker.com +66 65 348 6983. This is the sales director. They can do sails, they can do repairs, they can do canvas, and sell marine fabrics (including Sunbrella) and lines. They were super quick for us doing our repair. By March they were not super busy. The sail loft is well worth a visit if you have the time.

They also have some deck hardware (stainless cleats, no aluminium).

- Dec 2024: Shout out to the Rolly Tasker team who did an awesome job putting a new luff tape on my mainsail and made a new boom cover.

March 2025 - Sewing Machine Repair: You will need to know Thai or have someone translate, but I recommend K Somyod at 084-734-3184

March 2024 – Upholstery Work: Don't forget my friends at Seeds of Change. They can do lots of different repairs or create new. They made some great items for my boat, and let me use my fabrics, or they can supply what you might need. Sam +66 80 592 3171

Feb 2025 – Zoom Sails: If you are after new sails, check out Zoom Sails at <https://zoomsails.com>. Kiwi designer/owner, the sails are made in Sri Lanka. Excellent quality, good prices, good designs. They will ship directly to Malaysia or Thailand (or anywhere else). They have a guy in Phuket who can do measurements.

Feb 2025 – SE Asia Sails: This is run by Robert and his dad Mike Tasker (no relation to Rolly Tasker), who was previously General Manager of Rolly Tasker. They are a smaller company and wanting to prove themselves. <https://southeastasiasails.com/> Tel: +66 (0)76 604 598 Cell: +66 (0)99 376 3711

50/7 Moo 4, Ban Phara, Tambon Pa Klok, A. Thalang,
Chang Wat Phuket 83110

1.8.7.4 Rigging

2026: Highly recommend **Phuket Yacht Services / Aqualingua Co Ltd.** . "yacht rigging (inspections, tuning, etc.), storage, logistics, long term care, race and regatta preparations, and much more." For us, Jason came on board on short notice, gave practical running rigging advice, serviced and repaired Lewmar winches and Spinlock clutches. Contact: Jason Corall +66.6306.03363 info@phuketyachtservices.com

Rolly Tasker

<https://www.rollytasker.com/en/about-sails/standing-rigging-replacement-for-cruising-yachts-in-phuket-thailand/>

Jai +66 95 105 1943 In my opinion this is the best, rigger on Phuket, and I have worked with most including RT. Very very knowledgeable and reasonably priced.

You also have precision shipwrights <https://www.precision-shipwright.com/rigging.html>

1.8.7.5 Stainless Steel Work

2026: Recommend A-1 Marine based in Thalang (near Phuket Yacht Haven and Ao Po). Contact: Weerachai Rattanupakan +66.84.846.0456

wee_a1@hotmail.com <https://www.facebook.com/weerachi.rattanupakan/#>

Sail SE Asia – Sep 2023: Apart from the two brothers in Chalong, specialized in stainless steel jobs, who could you recommend for sailboat davit design & construction in Phuket?

- AME in boat lagoon. They did great stainless work for us. Designed, built and installed a davit system for a very reasonable price.
- This man is good and serious. I can recommend. "STAINLESS STEEL Chiao Chan Khammuang (SANG) Contractor Tel:089-648-4229 Stainless Steel Work 179/13 Banlipon, Tumbon Sreesunthon, Amper Thalang, Phuket 83110". near Thalang, not far from AoPo
- A1 at Yacht Haven if you're up this way.
- +66 62 562 9529 He is doing all my work and extremely professional highly recommend him and his team
- Metal Works, Boat Lagoon, behind East Marine

1.8.7.6 Liferaft Servicing

MATCHANU MARINE PHUKET CO., LTD.

157/5 M.7, Thep Kasattri Rd., T.Maikhao, A.Thalang, Phuket 83110 THAILAND

Office Phone: + 66 76 348250 Fax: + 66 76 348251 Mobile Phone: + 66 81 420 3082

E-mail: matchanuphuket@gmail.com Website : www.matchanuphuket.com

Basic inflate-test-repack for a 6-man raft was quoted at around \$250 USD in 2023. They will pick up and deliver anywhere in Phuket.

1.8.7.7 Diesel Mechanics

Mar 2026: C & C Marine (Parts & Repair). Contact Craig +66.81.078.4507: official Yanmar dealers. They have mechanics. Very professional. More expensive than other options, but you get what you pay for...

- Jai is highly recommended (Ao Po area)

- Noem of YSE is based near Ao Po +66.81.439.7424

- Sanae Service: good mechanics - they rebuilt our Yanmar transmission and replaced all on-engine hoses. They work hard and are very conscientious, but can make some mistakes.

Based in Phuket town, but will travel long distances (e.g. Yacht Haven) even for small jobs.

Contact: Golf +66.83.706.8918 mobile/SMS/WhatsApp

2025: Recommended Mechanics from various sources

T&T Mobile Marine (Paul) Mobile +66 (62) 649 8235

<https://www.ttmobilmarine.com/>

Dec 2023: We had Paul from T&T do repairs on a starter. He speaks pretty good English.

C & C Marine in Phuket (Craig) - <https://www.candc-marine.com/>

Oct 2025: I used C and C recently for some work on my Yanmar sail drives. They were very knowledgeable and professional.

W Tech Marine Services (Jai)

215/33 Moo.1 Pakhlok, Thalang, Phuket 83110

+66 (0) 83 505 2783

info@wtechmarineservices.com

Oct 2025: We have just had a rebuild done by chap called Jai who we found very good, had been a Volvo engineer now runs his own company - Wtech Marine Services. Came up to Yacht Haven. Would highly recommend Jai - meticulous speaks good English and uses Whatsapp +66 83 505 2783

YSE Marine (located Boat Lagoon)

<https://www.ysemarine.com/>

PME (located closer to Ao Po)

<https://www.pmevolvo.com/>

Oct 2025: Both YSE and PME are certified Volvo dealers.

Some Others:

Bow Patriot Mechanic Phuket - [Mobile] +66 994824654 – Highly recommended.

Try Neow on phone and Whatsapp +66 84-306-9410. Good mechanic and also brilliant at electrics and electronics- great all round guy.

Diesel Engine Parts: C & C Marine in Phuket <https://www.candc-marine.com/>

Also, Yanmar Parts available from Singapore:

<https://www.clls.com/product/yanmar-spare-parts/>

The US (Yanmar, Volvo, Beta, Universal): https://shop.toadmarinesupply.com/ships_store/

And the UK: <https://parts4engines.com/>

1.8.7.8 Outboard Motor Mechanics

Sail SE Asia – Apr 2025: We used this guy for working on our Tohatsu outboard: +66 94 236 9261 (Phuket)

There is a Suzuki Dealer just outside of Boat Lagoon on the main road, or second hand dealer called Waynes World. <https://maps.app.goo.gl/tUB63vCEM6pMid568>

1.8.7.9 Refrigeration and Air Conditioning

Phuket:

<https://www.scsmarine.com/>

<https://g.co/kgs/DxSg9Fn>

1.8.7.10 Fiberglass Work & Paint Supplies

Q: Any reasonably priced fibreglass supply shops in Phuket. For glass mat, polyurethane foam, epoxy & polyester resin?

- Phuket Fiberglass +66 76 614 239 <https://g.co/kgs/KCby4yo>

1.8.7.11 Water Maker Parts & Service

You can get filters at AME and HomePro.

1.8.8 Medical Services

Where can I get a yellow fever shot?

- Phuket Bangkok International Hospital 2nd,floor wellness centre, usually I just walk in 5min waiting.

1.9 Marinas, Haulout, Storage, and Repair Facilities

1.9.1 Marina & Haulout Comparisons

Sail SE Asia – Mar 2023 – Long Term Liveaboard Options: Q: Of all the marinas on the west coast of Thailand, which would be the cheapest for long term stay/ live aboard. I know about having to take my boat out of Thailand, but I would like a berth for 5-10 years. Also live-aboard moorings...

A: I recently asked all, and Port Takola's moorings came out as the cheapest.

A: Call Jack at Krabi Boat Lagoon (+66 88-500-0900). Long term rates are very negotiable. It is a good safe marina and close to Phang Nga Bay. Krabi marinas are less than half the price of Phuket marinas.

A: Krabi Boat Lagoon and Port Takola Yacht Marina are both very good. I would check those and see which one best suits your needs.

A: David Fox has excellent moorings adjacent to Yacht Haven Marina at Bht 4,000 per month with Lego pontoon jetty ashore for landing a dinghy. WhatsApp +66 93 749 9092

A: Premier Phuket boat yard for storage.

A: Port Takola. Protected, quiet, restaurant recently reopened. Very good prices. They even have mooring options in the protected marina basin, in the property. SO SAFE as well.

A: We found the prices great at Premier Boatyard in Phuket.

Sail SE Asia - Sep 2021: I thought that I would share a bit of research I have done on haul out costs around southern Thailand. All yards charge differently so to keep the comparison simple I have not itemised costs. This is for a 37 foot monohull, haul, pressure wash, cradle, one month on the hardstand then re-launch. Here we go, all prices in Thai Bhat:-

Ao Po	65,600
Boat Lagoon Phuket.	64,500
Royal Phuket.	45,500
Port Takola.	34,600
PSS Satun.	31,600
Boat Lagoon Krabi.	31,500

Good luck for the haul out season!

Ocelot – July 2013 – Boatyard Options & Work in Thailand: There are several yards here in Phuket that would meet your needs (large catamaran haulout). Coconuts, where we are (actually called "Chalong Boatyard & Storage") is the cheapest (we pay ~\$330 in/out & \$330/month) but is only sand & it has flaky power & not a lot of expertise.

Boat Lagoon is 3x the price, but is all concrete, has lots of (\$\$) workers around, but no toilets (you're expected to rent a condo). The 4 other yards fall between these 2.

Mike Cherry at AME (mikeame1marine@gmail.com) is probably one of the best gelcoaters around, & he can get you decent gelcoat (better than the stuff sold locally, apparently). but polishing the gelcoat after spraying it takes a LOT of time & effort.

Rigging can be had, especially if you can wait to have it imported, but you'll pay big time. Our new headstay (50' of 12mm Dyform) cost \$1K just for the wire, & we saved ~\$300 by bringing the swage, turnbuckle, & Norseman from the US

1.9.2 Coconuts Boatyard (Chalong Bay Phuket)

Aka Chalong Boatyard

<https://maps.app.goo.gl/4Q7YW4th1F3ax2Nz5>

Sail SE Asia - 2023: I have used Chalong Boat Yard. If you contact Jedsada at this yard he will facilitate great work. Jedsada is a great man and is fluent in English. Very honest with pricing and he will ensure whatever work is done by any contractor is done to a high standard.

If you choose this boat yard make 100% sure you are aware of all the charges such as power, water, charge for workers on your boat, crane use etc. They aren't that forthcoming with these extras until you either ask upfront or get these add-ons in the end. In saying that it is still good value and Jedsada Na Ranong (Khun Man) will act as an agent for you.

Ocelot – July 2013 – Boatyard Options & Work in Thailand: There are several yards here in Phuket that would meet your needs (large catamaran haulout). Coconuts, where we are (actually called "Chalong Boatyard & Storage") is the cheapest (we pay ~\$330 in/out & \$330/month) but is only sand & it has flaky power & not a lot of expertise.

1.9.3 Phuket M9 Marina (Chalong Bay Phuket)

Coordinates: 7°8'32.3N 98°35'48.9"E

Phuket M9 Marina is located at Chalong Bay, Phuket's famous port, near the police station, Tesco Lotus, international restaurants, tourist attractions etc. This area is also perfect for holiday getaways, and relaxation with a quiet natural escape.

<https://m9marinaphuket.com/>

1.9.1 Ratanachai Shipyard (Chalong Bay Phuket)

Ratanachai Shipyard Co., Ltd.
60/58 Tha-Rua-Mai Road
Ratsada, Mueang, Phuket

081-539-0778 | info@ratanachai.co

<https://www.ratanachai.co/>

<https://maps.app.goo.gl/3TzZyWRYXuTTp7736>

2023: We are currently hauled out at Ratanachai, very professional team. The project manager at the yard is really switched on.

2023: Ratanachai Ship Yard near Phuket Town is awesome! Very professional set up. Hauled out early this year in a 43' cat. no worries! Highly recommend!

1.9.2 Ao Po Grand Marina (Phuket)

Coordinates: 08° 04.089' N 098° 26.725' E

VHF 69

Ao Po Grand Marina, at the gateway to spectacular Phang Nga Bay, could not be more perfectly located. Best yet is the 24-hour access and zero tide restrictions

The ramp allows for haul-outs up to 100 feet using the Roodberg 47-ton trailer-lift or the 80-ton, 100-foot Roodberg trailer-lift for larger, deeper draft vessels. The hardstand accommodates 60 boats.

<https://aopograndmarina.com/>

2023: AO PO marina , price good, clean hardstand, lot of team to make your antifouling , I recommend Khun Samran.

1.9.3 Phuket Boat Lagoon Marina

Lat/Lon: N 07° 57.65' N / E 098° 24.91' E

VHF 67 & 71

Marina website: We have a wide array of facilities and services on our premises to cater to your every need. From wet berths to hardstands, we also provide electricity, fuel delivery and accommodation alternatives for both long and short stays. With amenities and dining options just a short walk away, your visit to the marina will be easy and worry-free.

<https://www.phuketboatlagoon.com/marina-boat-repairs/>

Sail SE Asia – Feb 2023: Do watch the tide coming into Boat Lagoon. Must come in on rising high tide. We draw 2m. Stay no more than 10m from the markers & it's fine.

Call on VHF 71 10mins out & a dinghy will escort you once you see the marina.

Amulet – May 2012: We came to Boat Lagoon Resort and Marina in February 2011 for a paint job, some relaxation and land travel to SE Asia. We had a new Thai 3 month tourist VISA and figured to get the boat painted first then leave it on the hard and do some land travel to SE Asia.

Boat Lagoon is a high-end resort and we were prepared to pay for someone else to do the work on AMULET for a change so we could enjoy ourselves. We settled in, rented an on-site air-conditioned efficiency room (\$360/month + utilities) and a car (\$350/month). We had what seemed like a good recommendation for painting contractor Samran Painting from another cruiser. We got two quotes, Samran and Oh Services. Samran was cheaper by quite a bit and he quoted 2.5 months to do the job which fit within our 3 months VISA. We saw no reason not to go with him.

What a HUGE MISTAKE!!! We should have gone with Mr Oh which in the end would have been much faster, cheaper and a better quality job. Our "vacation" and break from boat work never materialized. We swam in the resort pool only once. Otherwise we spent everyday including most Sundays working on the boat, losing sleep thinking of what Samran will screw up next and making expensive VISA runs as the project dragged well beyond the quoted 2.5 months.

Soon after we made an installment payment, a little ahead of schedule as he needed the money, bringing the total payment to 75% for the topsides and deck and 50% for the bottom (very little done) he decided to quit saying he wasn't going to make any money so he wouldn't finish. Apparently this is quite acceptable in Thailand, contractors take on work for a low bid, don't get the expensive extras they hope for, then just quit when they realize they aren't going to make any money finishing a job. We met a few ex-Pats having houses built that ran into the same situation. In our case we knew and specified what we wanted at the start. We even specified the exact paint colors only to have to switch the trim color at the last minute because the local supplier did not stock it, a fact Samran never bothered to check even though he knew what we wanted 2 months earlier.

When he decided not finish the job we made a deal through his agent Mr Prame and with the help of Nai (of Nai & Toe Phuket Inter Wood Work Co. LTD) that Samran would leave his tent

up (essential in this climate) and we would finish the decks ourselves hiring one of his workers directly. But when we finished with the decks and most of the damage repair he refused to take his tent down. I contacted the marina manager (no help at all) and several other contractors, none would touch Samran's tent. I said my wife and I would have to cut it up so we could get it down, he said fine with him as we could then buy him a new one. Finally Nai gave us a price of \$300 to take it down.

Nai is a great lady who had helped us in the past deal with Samran and knew many of the problems we were having. She's also a tough (but fair) lady not afraid of anyone. The tent came down smoothly and in the end she only charged us a little over half what she quoted!!

We were finally launched after 6 months on an original 2.5 month schedule. After watching the various contractors, here are my recommendations:

- I'd definitely recommend Nai & Toe for **teak decks**. Their main business is woodworking but will also paint if the job needs it.
- OH Services would be my choice of painting contractors. Mr Oh is quite the perfectionist, his people are pretty well trained and we haven't heard any serious complaints about his work.
- For stainless steel work and machine shop work the best is Luck Engineering, but they are in Phuket Town, not on site. After on-site contractor AME Services messed up our new rudder shaft I went to the trouble and extra expense to have Luck make it and it came out fine. Luck is a proper machine shop like a small shop you'd find in the States and does consistent good quality work.
- We had many things chrome plated through AME Services (Mr Wiwat) and were disappointed with most of them, some of our re-chromed winches already starting to corrode 3 months later. He says he sends things to Bangkok rather than the local chromer, to get a better job.
- Mr Peh of Chamnansin did a fine job of our interior cushions. Of the 6 or 7 other boats who had cushions done by Mr Peh we heard no complaints.
- Local Sails (Mr. Ket) did a fine job re-stitching our main sail, even doing extra work not expected and then refusing extra money.
- East Marine, the best but most expensive on-site chandlery, puts out a helpful Marine Services Address Book, ask for a copy. The above mentioned contractors (and many more) are listed there.

Despite our horrible 6 months trying to get AMULET painted we have few complaints about the marina, other than they charge for the privilege of having a tent but take no responsibility for it (or it's removal we found out when Samran refused). The tent takes up no more room than the space allotted for the boat, so the charge (\$88/month) makes no sense. Yes the marina is expensive but they do not hide this fact and you know it going in.

For our 44' monohull the monthly berth charge came to \$725 + utilities. It costs the same in or out of the water. On the hard you pay extra for the cradle and scaffolding.

There is a depth problem even within the marina (besides the approach channel) and after a fresh bottom job you may not want to linger.

On the plus side, the staff is well trained, friendly and efficient. We saw no problems with boats being hauled by the two first rate travel lifts they have (\$788 round trip). The travel lift crew is professional and careful. The boat cradles, support systems and scaffold systems are very good. The dockmaster and his people are as well professional and friendly.

The marina is well protected from any bad weather or sea state. But it can get hot as there's usually not much wind and the mosquitoes do get hungry at dusk. With the multitude of on site and nearby marine services you can get anything done or obtain almost anything you wish, the latter assuming you're willing to pay about twice what items and materials cost in the states.

Ordering items from overseas is not worth the customs hassles and charges. There is no duty free "Yacht In Transit" status for items shipped in.

In general, all the completed paint jobs we saw at Boat Lagoon looked good. But it's really the attention to the details that will determine whether the job will last. If you come to Boat Lagoon for a paint job, we recommend that you read up on the paint manufacturer's literature and that you pay attention to what the contractor is doing and how he is doing it. This is not the place to just leave your boat and expect the job to be done properly. You may find yourself repainting in 5 years as opposed to 10-12 years.

1.9.4 Phuket Premier Boatyard

Coordinates: 8°10'32.9"N 98°19'30.7"E

Premier Boatyard is the pleasure yachts' servicing yard in north Phuket, very well protected by natural shelter and easily accessible.

Premier Boatyard is located on the seaside just beside Yacht Haven Phuket Marina and only 10 minutes from Phuket International Airport. We are pleased to provide the best services for your boats.

<https://phuketboatyard.com/>

Khun Non Whatsapp +66 81 486 9618 (Slow to respond)

Bird of Passage – Dec 2018: Storage quote for 6 months at Phuket Boatyard for LOA 16.7m, 20 tons:

- haul out 33000 baht/in-out
- cradle support 5500 baht
- pressure wash 3300 baht
- hardstand 1210 baht/day, how long will you stay?
- contractor surcharge 150 baht/man/day
- Vat 7%

1.9.5 Phuket Yacht Haven Marina

Phuket Yacht Haven (PYH) is located on the northeast coast of the island and is only a ten minute driver from Phuket International Airport. The marina is equipped with 320 berths, Bistro-style restaurant and wide range of facilities & services, the marina is ideal for travellers and sailors seeking a perfect port-to-call as a base to enjoy the pearl of Andaman Sea.

info@pyhmarina.com

+66 (76) 397 908

<http://www.pyhmarina.com/>

<https://maps.app.goo.gl/kuxvzUALtBGegdbM7>

Yacht Haven does not have a haulout facility, but Premier Boatyard is nearly right next door.

1.9.6 Coconut Cove Moorings, Phuket

Located just north of Yacht Haven Marina, the moorings are a private mooring field of maintained moorings. It's a cheap place to hang out (anchorage possible too) or leave your boat in a fairly secure location at less than marina prices.

<https://maps.app.goo.gl/6WJECN8RcecF81B99>

The contact we were given was David david.fourier@gmail.com +66 93 749 9092

1.9.1 Port Takola, Krabi

Coordinates: 8° 2' 33.72"N 98° 53' 48.98" E

VHF Ch. 69

Just 30 nautical miles east of Phuket, Port Takola is a full-service marina located between Krabi Town, and a renowned tourist town, Ao Nang. We offer year-round shelter with short access to modern convenience and many of Thailand's finest yachting destinations.

Calm. No current and little wind. Secure. A restaurant on site.

The boatyard can lift boats up to 38 tons and provide comprehensive yacht repair services.

<https://porttakola.com/>

<https://www.facebook.com/porttakola>

matthew@porttakola.com +66 89 446 1991

From a magazine article Aug 2025: Phase one of the marina commenced operation in 2018 with 50 wetberths connected to a four-metre-wide concrete pontoon system built by Marinetek. The hardstand, covering about 9,000 sqm, can accommodate up to 50 dry berths for technical repairs. It is serviced by a Roodberg submersible hydraulic trailer with a maximum lifting capacity of 38 tons with 2.5 metres maximum draft.

The slipway is designed to have a 12-meter span to accommodate the lifting of large catamarans.

The fuel dock supplies diesel and Gasohol 95 fuel.

The tourist town of Ao Nang is within a 10-minute drive of Port Takola, while Krabi International Airport is only 40 minutes away.

At sea, Krabi is part of the Phang Nga Bay archipelago, and also home to many renowned islands including Phi Phi, Reiley, Koh I-long, and Lanta. This makes us an ideal home port as well as a port of call on the Andaman Sea."

Krabi, located on Thailand's southwest coast, lies approximately 30 nautical miles east of Phuket. The province has rapidly grown to become one of the top tourist destinations in

Thailand. This is due to its beautiful natural attractions such as its coastline, picturesque limestone karst terrains, abundant national forest, and over 130 islands to explore.

Krabi lies on an important international passage route between Langkawi and Phuket. This makes it a popular stop for international cruisers for provisioning, leisure, and transportation.

As Phuket is dealing with infrastructure issues to support an influx of tourism development, Krabi has become an alternative as a more family friendly and more nature-orientated destination.

The opening of the Wattanapat International and Krabi Nakarin International Hospitals have improved health care services and the Central Krabi shopping plaza is scheduled to open later this year. These developments will make the province more attractive for expatriates seeking to establish long-term residency.

Port Takola FB Page – May 2025: We have completed installations of Pier B and C- we are now able to accommodate 80 wet berths from 12 to 15 meter boat with 32 amp power supplies.

The T head berths will be able to accommodate up to 25 meters boats, with 63 amp single phase power supply.

Sail SE Asia 2025: I popped into Port Takola Marina for a few quick jobs. The line handlers were first rate getting me into a very tight berth and knew how to tie a boat up!

Headway Engineering arrived bang on time to do engine work and quickly discovered a small bolt which had lost its thread. No problem and the fitting went away for its tap and dye treatment. All in all a thoroughly professional engine service.

My next concern was my toilet where the flushing pump had developed a small leak. An incredibly difficult thing to get at – you needed to get into a small twisted position and have very strong wrists. I thought it was the plastic hose at the bottom but the engineer quickly saw it was elsewhere and dripping out of sight behind the pump giving a false impression. The bottom of the pump was dismantled and taken away to be cleaned and polished. The O ring had broken and was straight away replaced from a huge range of stock which Headway had. And all done at a very competitive price.

In the meantime head man at the marina, Matthew na Nagara, is building a new office block complete with showers, loos and a nice swimming pool – completion towards the end of 2025.

Port Takola is well worth a visit.

Sail SE Asia – March 2023 – Checking Out: Shout out for Port Takola and all things Krabi. I've just checked out at Krabi Customs and Immigration to go to Langkawi and back for yacht visa after 3 years stay in Phuket and Krabi. It was super easy with pleasant people all along the way. I'm berthed at Port Takola and the team there under Matthew Na Nagara are wonderful. The Marina Manager Moss did the harbour clearance online and I just did a quick dash to Customs and Immigration. Port Takola is a wonderfully friendly place to be and I think by far the best option for marina berth in all of Thailand. Quiet with a personal touch and getting more services all the while. The fees are great too.

2023: We just hauled out in Port Takola, Krabi. Very professional and took great care with the boat. Our beam was too wide for most of the smaller yards in Phuket and Langkawi. Cat with 8m beam.

2023: Try Matthew at Port Takola, Krabi. Has a wide slip and a big trailer type haul out chariot. I've hauled my 16mx8.4m wide cat there before and will do so again in a couple of weeks. Very helpful guy. Voyage 500, I say 16m because of the bowsprit!

2023: They have a Roodberg hydraulic trailer system. Very safe for hauling catamarans. State of the art product from Europe.

Port Takola – June 2019: @porttakola now provides 30% discount for dry storage and 25% discount on boat lifting service. Repair services are available with onsite chandlery.

We are a full service marina located at Krabi, about 30 nautical miles east of Phuket. PM me for more details.

1.9.2 Krabi Boat Lagoon Marina

Coordinates: 08°00.686' N 098°57.66' E VHF 67

This spectacular Marina Complex is safely nestled amidst a magnificent Mangrove forest and boasts sweeping views of the Andaman Ocean. This lagoon is far removed from the chaos and the hustle and bustle of Krabi town and life here is rather peaceful and irrefutably serene.

In Thailand, location is absolutely everything and it is fair to say that Krabi Boat Lagoon most certainly has it covered! With the airport being located just a fifteen-minute drive away, and the culturally rich Krabi town just another ten; you're never too far away from all of the action if you fancy a change of pace.

<https://www.krabiboatlagoon.com/marina.php>

See marina website for approach chartlet.

Sail SE Asia – Mar 2025 – Krabi Boat Lagoon vs Krabi River Marina: Krabi River Marina is a plastic clip-together marina and is subject to current in spring tides. But handy to the town and services.

KBL is safe and secure. No current and little wind. Hardstand and services are returning after Covid. But it is remote. Best to have a car or rent one. Rental available.

Both have good people and excellent to deal with.

Sail SE Asia – June 2024: Located in a resort complex with a pool. Very much underused and 40 minutes or more drive from Krabi town. Great place to leave your boat as fresh water keeps the barnacles away. Close up Krabi airport. (Jetstar now flying to Singapore!)

Jan 2023 – Wild Fox: A quick update on some points about Krabi Boat Lagoon which I have just left after a haul out and five week stay.

Jack the manager and his staff are to be commended for their helpfulness. Nothing is too much trouble.

The marina is currently being dredged to a MLWS of 2 metres; work estimated to be finished by end January 2023.

The laundry service is no longer available and fuel has been temporarily suspended for technical reasons. Fuel by jerry can will be arranged. Also restaurants are down to one, but hostess Garn is wonderful and provides great Thai and western food at affordable prices. All served by attentive and friendly staff.

There is a cleaning and painting service, but extremely limited and needs close supervision; almost no repair service except electrical which is top class and run by Sombat and his brother. Wonderful work and great to have them on the boat. Jack will make the contact arrangements for you.

Sail SE Asia Januray 2022: Just had a relaxing week in Krabi Boat Lagoon catching up with old friends. It seems like a few places in Thailand, KBL has turned the Covid corner and there's emerging signs of life and activity. There are three marine businesses operating here now doing most services including high quality stainless steel fabrication, painting, antifouling and woodwork.

Riccardo, (Modify Marine, a long time local) has been busy since December. Lek does stainless steel work and machining and Ning has a new business in Popeye's former premises doing polishing, maintenance and painting. — at Krabi Boat Lagoon.

Garn has her great restaurant, Captains Galley, open every night with Thai and western food.

I know this sounds like an unashamed promotion but I am excited to see an awakening and businesses beginning to flourish after two hard years.

<http://www.krabiboatlagoon.com/krabi.../yachting-service.php>

Sail SE Asia – Feb 2017 – Getting Around: For those who have a fast dinghy, take the 20 minute dinghy trip from Krabi Boat Lagoon to Krabi downtown. Take a look at Google Earth to find the way. We tied up behind the public floating pontoon for the longboat taxis near Maharaj 10, and explored the city centre. Up Maharaj 10 is a market (at noon we were a little late), street vendors for a very cheap lunch, and then some bargains at the Vogue Department store, which also has a small basic supermarket. All our shopping needs met and a great alternative to Ao Chalong. There are many cafes and restaurants, money changing and a wide variety of stores. You can also anchor in the river.

1.9.3 Krabi River Marina

Sail SE Asia – June 2024: This marina is a plastic cube construction previously fallen into disrepair and there was a fire. Now it is being renovated and toilets and showers completed. Subject to current, especially at spring tides. Big advantage is that it is in Krabi town, handy to the town and services.

1.9.4 Satun PSS Shipyard

Coordinates: 6°39'22.7"N 99°58'16.3"E

Phithak Shipyard and Services (PSS) was established in 1992 in Ban Chebilang district, Satun province in Southern Thailand, with the demand for repair and maintenance services for commercial boats such as fishing boats, cargo boats, and official vessels.

PSS and its staff aim to provide efficient and friendly services for boat repair and maintenance by supplying quality materials, good workmanship and tools at a reasonable price. Boaters are welcome to stay on board and DIY.

<http://pss-satun.com/>

Sail SE Asia – Aug 2025:

PSS is a Working shipyard

They work on many local boats--Fishing boats, large ones and small ones, largest is about 200 tons.

While I was there a large Customs boat had an engine refit.

They also work on sailing yachts, mono hulls and catamarans.



The Yard is based on the banks of a river in Che Bilang. The river is easy to navigate, plenty of depth at high tide.

The Yard is all concrete with concrete dividing walls about 600mm high. Their system of hauling out and moving boats around the yard is via cradles and a large winch (capable of 200 plus tons). To move boats sideways to allocated spots they have multiple pulleys cast into the concrete and they use cables to move the cradles. They are well versed in these movements, they just go about their business quietly.

Haulout: As a boat sails into the gate and cradle waiting in the water, they dive underneath and chock the boat with timber, and then haul out. They maintain hands all round on your lines to help position and hold in place. The cradles have large pads to support the sides of the boat while the weight is taken by the keel. Having seen these cradles in high winds there is no movement of the boat.

Once the boat is out of the water they clean the hull (if you want) and then move the boat into its allocated position. They then move either simple ladders or one of their mobile ladders to the boat to allow access.

I, like others, stayed on my boat. there is power and water should you wish to connect, but are charged for. I connected power and water was to use for boat tasks.

The yard area is locked for guests, with toilets and a shower, basic but functional.

If you don't want to stay on your boat they have 5 (I think) units directly across the road for rent. Again they are basic, but with AC, bedroom, kitchen area, and lounge area. I have seen some use these predominantly as storage for boat stuff while boats are attended to. One was used as a work from home office while the boat was worked on, so they are good units.

If units are not available, or you prefer something else, Satun has all levels of hotel accommodation, and rates can be negotiated. Mr Un, the yard manager, is able to help in this regard.

The little town of Che Bilang is a Muslim town, very simple but always busy. At the far side of town is a 7-11, but before you get that far there are any number of little shops for restaurants, food and grocery items. And they are not over-priced.

There was one restaurant that made lunch and dinner for me every day and delivered it to the yard for about 150 baht per day. Each day was varied - very delicious.

Getting Around: To get to Satun and back, you could do the local pickup truck buses, but I hired a motorbike from Mr Un (best rate in Thailand). He also hires cars.

Cars and bikes can also be hired in town or at Port Tammalang.

The Satun region is well populated with caves, waterfalls and other natural wonders. plenty of day trips to be had. The next big city is Hat Yai . Also an international airport location, takes 2 hrs by the local bus system and the cost is only 100 Baht each way. Hat Yai has all the normal Thai entertainment, good medical facilities etc.

Krabi is about 4 4.5 hrs drive, Phuket an additional 2 hrs at least.

Getting deliveries from say East Asia Marine is usually next day possible.

Doing visa runs or just even day trips to Gans (in Langkawi, Malaysia) is easy in the daily ferry at about 400 baht one way for a 1 hour plus trip.

Services at PSS: PSS has a comprehensive machine shop. Multiple lathes, and tools to fabricate most things. I've seen them fabricate wooden bearings from logs for the fishing boats prop shafts, propellers shaped and prepared, and any number of items rolled bent and welded. Very capable team. They also excelled in stainless steel fabrication.

I've had many little items made by them, including extending my solar arch to accommodate larger panels.

Give your problem to Mr Un and he will come up with a solution.

There is a small chandlery there as well - open 7 days a week. It has a good range of basic hardware. And they will try to source what you need. But if you want specific items, you are best to order online and have delivered. And if you can't handle the delivery, Mr Un can do the order and delivery on your behalf. The chandlery is set up for fishing boats.

Shortly after I arrived, the place was visited several times by teams from Customs, they were inspecting the yard for suitability in terms of facilities, safety and security. All of which met with their approval as shortly after a large customs boat came to the yard for a retrofit of its engines. They brought a contractor from Bangkok to do the works. It was interesting to watch as they levelled the vessel to mm accurate figures. This contract crew then worked constantly from late January to late June when they splashed her, then a few more weeks dockside before her departure.

The outcome of this is the Customs audit of the yard for suitability, safety, and security.

There is a contractor there - All Boat Services, run by Sunan. Sunan and her late husband had their own cruising boat, often docked at Rebak.

Sunan is a perfectionist, but does have to work with her local team. She maintains control over any fiberglass work, and she has some great carpenters and painters. She also works at

Pattaya so booking ahead with her is important. Whilst she was always busy while I was there she was careful not to over commit. She also has ability to bring in other trades as required.

If you want say just anti foul and minor hull work, Mr Un can do this quickly and efficiently. If you are looking at more extensive cosmetic work, then Sunan and her team, coupled with the yard services, is the right mix.

if you want to supervise your own work, either the yard or Sunan can provide bodies for you. Engine work can be done by Mr Un's team or he can call in experts for you.

I was well satisfied with the work, cost and approach. For me it's "highly recommended"

Sail SE Asia – Aug 2025 – A counter response to the above “review”: We visited the yard in 2019 after several recommendations. Everything you have reported is factually correct. However the yard wasn't an option that suited our needs.

Many other Cruisers return year after year, and like you, highly recommend the yard.

But just to paint a fuller picture, areas that didn't suit our needs.

- For a major keel up refit, the necessary trades weren't immediately available. I understand Popeye Marine have returned to the yard which provides a top end option for refitting. As you mentioned the yard have a very impressive machinery shop which can manufacture almost anything.
- Our scope of works (based on others with similar work) would have taken 12 to 18 months, with a lot of the work done by ourselves. Great for the budget, but not so much if you want to go sailing. In the end we opted Phuket Boat Lagoon, which is a one stop shop with every conceivable trade onsite. Yep, we paid a hefty premium but the boat was returned to us 90 days (as per scope of works) later in perfect condition.
- Satun is a nice place bit as you mention is a Muslim town. I respect folks' beliefs, but having lived and worked in Asia for a decade or two, I like to have a pint or a burger once in a while. Sure Satun has lots of bars but most are karaoke bars.
- The onsite accommodation as you mention is basic. Living on a boat during a major refit lasting a year or more wasn't on our agenda (certainly not my wife's).
- The yard is somewhat remote and as you describe you need transport, especially if staying offsite.

In all, your review was pitch perfect and PSS has lots of very happy customers. For us a perfect place for an annual haul out.

For more sophisticated work (we needed a gearbox rebuilt amongst other things) I would go north.

Totem – October 2014: PSS Satun, a Thai shipyard just a hop over the southern border with Malaysia, sits at the edge of a small village up a winding muddy river. Because we can only enter the river at high tide, we spend the night before our haulout at a bend where the depth drops enough to keep water under the keel through a full swing.

This is our calm before the shipyard storm. Last year, we spent about a week in this same yard to put new bottom paint on. Our only hindsight regret was that we didn't fully appreciate the breadth and depth of skillsets, and how much more we could have done. Not this time!

Our planned task list, including a few “nice to have’s” which may not make it to the top of the list due to time and money:

- New water tank – stainless or fiberglass
- New stanchion bases
- New refrigerator box
- Full rudder inspection
- New bottom paint
- Awning frame
- Dodger reinforcement
- Stern rail / arch modifications
- Anchor roller (minor modifications to lock the anchor in place when stowed)
- Bow rail-extend the stainless rail back to the first stanchion
- Waterline stripe

November Update: Just like remodeling a house, there are times when it seems to zoom ahead and times when it feels grindingly slow. Some days feel like little has progressed, and on others, there are glimpses of transformation. But it can be frustrating: the yard is really busy, so work doesn't always follow the timeline we expect. The stainless shop is backed up, so we have multiple stainless projects that haven't even started: awning frame, bow roller, and a lot of reconfiguration of the stern rails and solar arch... oh, and we hoped to add to the bow pulpit also. It's a little stressful, since it's work we are especially keen to do, and we can't extend for long

1.9.5 Blue Ocean Shipyard near Trang

<https://blueoceanicshipyard.com/>

CONTACT US FOR MORE INFORMATION :

+66 (0)93-671-4705

info@blueoceanicshipyard.com

<https://goo.gl/maps/LeqKh8RWrx9egPNL6>

Docking services by mobile boat hoist with max capacity 600 tons.

- Width capacity 14 meter
- Length capacity 60-70 meter

Aphrodite – January 2025: (28m monohull) We had a good experience at Blue Oceanic shipyard in Trang during a 2 week visit. Easy river access with 3 meters draft. On a 2.4 meter tide we did not see less than 1.8 meters under the keel. 600 ton travel lift or 175 ton hydraulic trailer. Deliveries from all over Thailand were efficient. I pre ordered materials from shopee and had deliveries from East marine, Pattaya and Satun.

Comments:

- Quite pricey at 1250 nzd per month for our 48ft cat.

1.9.6 Pattaya Ocean Marina Jomtien

Coordinates: 12°49'33"N 100°54'18"E VHF Ch 12

Renowned as one of the best marinas and yacht clubs in Asia, Ocean Marina Jomtien is the main port of call for sailors looking to explore the Gulf of Thailand and the nearby islands. Setting the standard for marine hospitality in the region, visitors can expect superior facilities, expert support and immaculate care and attention. Visitors can also take advantage of golf-cart transfer service to each arm, and wheelchair access to all walkways on and around the marina.

<https://www.oceanmarinajomtien.com/marina/hardstand-trailers/>

1.9.7 Racer Marina (Hua Hin)

Coordinates: 12 40.77 N 99 97.78 E

The only fully equipped Marina in the east coast of the Gulf of Thailand. Just 20 minutes from Hua Hin.

Racer Marina has 80 wet berths which can accommodate yachts of up to 75 feet. The Marina features a world-class concrete pontoon system, and is located in a non-typhoon area secured for owner and boats.

- The only fully equipped Marina in the West coast of the Gulf of Thailand
- 24 hours access with CCTV
- Hardstand facility
- Boat boys to help you docking
- VIP Service to manage your boat
- Café/ Restaurant
- Studio or 2 bedrooms appartement to rent
- Maintenance work via the Marina
- Showers, Toilets and Laundry service

Address:

5/2 Moo 1 T. Praknampran

A. Pranburi J. Prachuapkirikhan

77220 Thailand

Mobile: +66 (0)950 168 666

Office: +66 (0)32 632 206

E-mail: marina@racermarina.com

<https://racermarina.com/>

<http://facebook.com/RacerMarinaHuaHin>

<https://goo.gl/maps/tiVwxBCUFbiv5ASj7>

Sail SE Asia – Aug 2019: I am actually in Racer Marina. They have an interesting offer for long-term hardstand. Racer Marina - Ban Pak Nam Pran, Prachuap Khiri Khan, Thailand

1.10 Embassies and Consulates

Wikipedia says there are 79 foreign consulates and embassies in Bangkok.

The current “diplomatic entities” list maintained by the Thai government is here:

<https://www.mfa.go.th/en/page/diplomatic-and-consular-list>

1.11 Getting Visitors In and Out

1.12 Communications

1.12.1 Social Media

Much of the communications that used to be handled by VHF and SSB has moved to cell phones, internet, and Social Media. Here are some tips on getting plugged into the local info/social life.

Facebook Groups

[Sail SE Asia](#) General group covering all of SE Asia

[Women Who Sail SE Asia](#) (women only!)

Whatsapp Groups (not a definitive list)

Soggy Paws – Dec 2022 – Get Whatsapp: If in SE Asia (anywhere), you MUST have a Whatsapp account. This is an SMS-type messaging system that uses data. Most of the carriers in SE Asia charge per message for true SMS messages. Also, changing from country to country as cruisers do causes you to lose contact (because your sim card and therefore your number changes). Free to download, easy to sign up, and allows you to inexpensively message anyone anywhere who also has a Whatsapp account, no matter what country they are in. It also allows you to retain contact as you move cell phone numbers. If you see a phone number posted with (WA), you know that is the Whatsapp number for that person.

1.12.2 VHF

Hardly anyone except international cruisers use VHF in Thailand, and few of them actually maintain a constant watch on channel 16. Most people use cell phones.

General VHF Advice that applies to all areas: Be aware that on high power, a good VHF will transmit 25 miles line of sight. So if you are only doing within-anchorage communications, switch to low power. On the flip side, if you are trying to call across island, or to the next island, use high power, and turn your squelch down. Make sure you are aware which channels are automatic low power (ie 17, 67 on some radios), and stay away from the low-power channels for long distance conversations.

Though widely spaced in channel number, channels 16, 68, and 18 are very close to each other in frequency. Most VHF antennas are ‘tuned’ for channel 16, so long distance communications will work best on 16, 18 or 68. Conversely, in a crowded anchorage, transmission on high power on channel 18 or 68 may ‘bleed’ over to channel 16 (and almost any other channel, if you’re close enough). You don’t need high power to talk to the boat next to you, so turn your radio to Low Power!!

Also be aware that some channels that Americans use frequently are 'duplex' channels in International mode. So, for example, you may have trouble communicating with a European boat, or an American boat whose radio is in International mode, on Channel 18. (see any VHF guide for the full list of international and US channels and frequencies, but any US channel designated 'a', like 18a, 22a, etc will cause trouble with VHF's in international mode).

Make sure you ask in each port what the local channels are--both so you know how to reach someone ashore and so you know not to use those channels for your off-channel conversations.

1.12.3 SSB Radio Frequencies and Nets

As far as we are aware, there are no regular nets in the area.

Australian Weather Broadcasts are regularly held on 6227, and they are quite loud in SE Asia, so avoid that frequency when planning a sched.

1.12.4 Cell Phones, and Internet Access

There may be wifi available at some resorts, and there are still "Internet Café's" in the bigger cities, but internet access in Thailand is largely by data sim cards

1.12.5 Mail & Shipping Stuff In

1.12.6 News

There are several English language news sources in Thailand:

1.13 Diving

1.14 Cruising Information Sources

We are indebted to the people and organizations below for documenting their experiences and sharing them with us. We hope they don't mind that we've gathered their comments into this document to share with other cruisers who don't have internet

A few details about the boats are included, where we know them, so you can assess what 'a foot under the keel' means, for example.

Where it's important, we've annotated the contributions. But every section is a mix of several sources.

1.14.1 Local Websites

Here are some websites you should visit when you are looking for information on this area:

1.14.2 Cruiser Reports

Terry Sargent from s/v Valhalla has been gathering anchorage waypoints from other cruisers, and making satellite charts for most of the countries in SE Asia and has the info on the web to download for free. Terry's info is currently hosted here:

<https://sailingamazinggrace.com/charts/terrys-topics>

Likewise Sue and Jon Hacking from s/v Ocelot have been cruising SE Asia for many years, and leaving a trail of information behind. Check out their extensive collection information and charts here:

http://svocelot.com/Cruise_Info/Indian/Thai_Cruising.htm

1.14.3 Noonsite

Originally started by Jimmy Cornell, this site is a great repository of information for all those out-of-the-way places. Made possible by YOUR contributions.

<https://www.noonsite.com/place/thailand>

1.14.4 Seven Seas Cruising Association

The SSCA is a world-wide organization for cruisers whose primary function is to exchange information about cruising destinations. They have a monthly publication that is mostly letters from cruisers about the areas they are cruising. They also have a good website and a well-attended bulletin board. Membership is reasonable, and the monthly publication is available electronically every month. Indexed back issues are also available electronically.

<http://www.scca.org>

1.14.5 Ocean Cruising Club

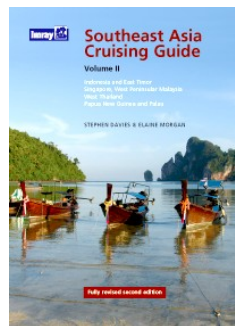
The OCC is a world-wide organization for cruisers whose primary function is to exchange information about cruising destinations. They have a website and bi-annual publication that is mostly letters from cruisers about the areas they are cruising. Membership is reasonable, and the publication is available electronically. Indexed back issues are also available electronically.

<http://oceancruisingclub.org>

1.15 Printed Sources

1.15.1 Southeast Asia Cruising Guide – Vol II - 2008

Southeast Asia Cruising Guide (Volume II) (2nd Edition, 2008), by Stephen Davies & Elaine Morgan



Area covered PNG, East Timor, Indonesia, Malaysia, West Thailand

This is the book of choice for cruisers heading from Darwin through Indonesia to Singapore, Malaysia and Thailand. It is also excellent for the more northerly trip via PNG, Palau, and then through Indonesia. Stephen Davies and Elaine Morgan's detailed text provides cruise planning information, an extensive discussion on climate, technical data concerning radio and weather forecasting services and general background commentary on each country. Each region is then treated in detail and pilotage information is given for key harbours. This pilot is a unique source of information for cruise planning and also will be an essential reference for yachtsmen on passage.

1.15.2 Southeast Asia Pilot – 5th Ed

<https://www.southeastasiapilot.com/>

1.15.3 Lonely Planet Thailand (latest edition)

It's always useful to have the Lonely Planet that covers the area you are traveling in, to give you background information about what's ashore.

1.15.4 Thai Phrasebook

A good place to get the basics is here:

https://en.wikivoyage.org/wiki/Thai_phrasebook

But better to learn the basics by hearing them vs the written interpretation of Thai.

1.15.5 Diving Guides

1.16 Recommended Reading

For background on the culture and history of Thailand, we recommend the following books:

2 Thailand's West Coast (S to N)

2.1 Overview



2.2 Ko Lipe

Sail SE Asia – Oct 2023: Koh Lipe is only about 25 km from Langkawi, but is across an international border. We are anchored on the north side of the island, but the immigration office is in the south. So we jumped in the dinghy and zoomed around to the mostly white sandy beach--whitest we've seen since Bruny Island. Anchored the boats and strolled up the beach to

the immigration office. We were told to come back in an hour, so we went exploring and came across a parade.

Given that the entire economy of the island is tourism, which essentially grinds to a halt in the hot rainy monsoon season, it's no wonder that the return of the ferries is a cause for celebration. Sitting here at our anchorage, I can still hear the music blasting.

Sail SE Asia – Nov 2022 – Check in at Ko Lipe: I did it 2 times and got in a lot of trouble a few years ago. I think the only way to check in to Koh Lipe from Langkawi is if you intend to stay in the Butang Islands and return to Langkawi without going to any other Thai port. You will only find immigration in Koh Lipe who are there primarily to clear passengers arriving on the ferry from Telaga Harbor.

Asia Marine Cruising Phuket Area Overview – 2020: Ko Lipe is a small island in the Adang-Rawi Archipelago of the Andaman Sea, in Satun Province of southwest Thailand, close to the Malaysian border. Ko Lipe is on the border of the Tarutao National Marine Park and is directly south of the larger islands Ko Adang and Ko Rawi, and about 50 km from the island of Ko Tarutao. It was originally settled by a group of sea gypsies originally from Malaysia, known as the Urak Lawoi' people.

2.3 Ko Rok

Sep 2025: Moorings are still there. 6 red ones near Ko Rok Noi NE (straight between islands) and 1 red on the south after 3 white ones (don't take these, they are way too close to the reefs)

Asia Marine Cruising Phuket Area Overview – 2020: Brilliant white-sand beaches, crystal-clear water, expansive coral reefs and metre-long monitor lizards: welcome to Ko Rok.

Protected as part of Mu Ko Lanta National Park, these gorgeous twin islands boast some of the finest snorkelling in Thailand's Andaman Sea. Roughly the same size, they sit only 250 metres apart, with hard and soft coral covering the channel in between.

2.4 Ko Muk

Asia Marine Cruising Phuket Area Overview – 2020: Ko Muk is mostly occupied by sea-facing towering cliffs to the west. On the east side of the island is a village of fishers who have still maintained their ways of life as islanders. On the island to the west is Tham Morakot, a sea cave. With light from the outside, emerald water can be seen inside the cave.

2.5 Ko Racha

2.5.1 Ko Racha Yai

Soggy Paws – Dec 2023 – Ko Racha Yai: There are around 3 anchoring/mooring areas at Ko Racha Yai. We spent New Years Eve in the middle on the west coast. There are a number of moorings that *look* good and strong. When we arrived, several of them on the south side of the bay were free, but we soon found that the Thai Navy was having a ceremony on shore and had a ship just offshore, and (apparently) wanted a clear line of sight between the ship and the shore activities. The tourist boats come and go frequently enough that if you just hang out, you can get a mooring without too much trouble. By 5pm it was fairly empty. It would also be possible to anchor outside the mooring area, but it's fairly deep, so watch your swinging radius.

Compared to Nai Harn, where we had spent the previous week, this was a pretty calm tame place to hang out for New Years' Eve. We did not go ashore.

Another area on Ko Racha Yai is the bay on the north coast. This bay is OK during NE season if the wind isn't blowing too hard or too northerly. But still full of day boats. We didn't go in, but passed by in the morning.

On the east coast, across from the big bay on the west coast, are 2 bays with beach and snorkeling. Would be good in SW season. Iffy, for overnight in the NE season. Probably full of day boats in any season.

We saw day boats in other areas on the SW corner of Ko Racha Yai on AIS, probably dive boats. Area looks like it would be good diving with clear water and deep drop-offs. But you'd need a surface attendant.

Sloepmouche – June 2019: 07° 36.33' N / 098° 22.63' E Hard bottom. Good AIS Cellular Signal.

Sunsail Phuket - ??: The Northeast anchorage is in 10 to 15 metres again on a sand and broken coral bottom. The moorings here should only be used by dinghies as some are in just a few feet of water. Swimming and snorkeling is good but strong currents can be found just outside the bay so be careful. It is not suitable overnight in the Northeast season and can be exposed to ground swells in the Southwest season. Ashore is the Ban Raya resort and a path leading to Bungalow Bay. Do not enter the Northern bay of Ko Racha Noi as it has many coral heads

2.5.2 Ko Racha Noi

Ko Racha Noi is 5 miles south of Ko Racha Yai, and actually consists of 2 islands.

2.6 Ko Lanta

Asia Marine Cruising Phuket Area Overview – 2020: Koh Lanta lies on the West coast of Andaman Sea in between Krabi and Phi Phi Island. Stunning scenery, fantastic white sandy beaches, coastlines have more than 70 small islands and plenty with forest, coral reefs and under water life. The geography of the island is typically mangroves, coral rimmed beaches, and rugged tree covered hills. Lanta is far away from the main towns of Phuket and Krabi, and offers a far more peaceful version of Thailand. In fact, so peaceful that 1 day might not be enough!

2.7 Ko Phi Phi

Phuket Whatsapp Group – March 2025 – Maya Bay:

There are some buoys in Maya Bay, no anchoring allowed. Buoys usually are taken by day trip tourist boats but if you arrive around 4 pm, and are patient you can get one. We have been a few times, always finally got a buoy.

It is a National Park, there is a 400thb fee per person which gives you 4 days stay in total there and on the western side of Phi Phi, a park ranger boat usually runs around in the afternoon collecting. (But you may not have to pay if you arrive late in the day and leave in the morning).

It's very crowded and loud already in the early morning.

- We've recently moored onto a buoy in Maya Bay and had the bay to ourselves after sunset except one other sailing boat and it was pretty spectacular .. until 6.30 am when the long tail boats started to arrive, definitely worth an overnight stay if you can get a buoy.

Soggy Paws – Jan 2024: Phi Phi Don is THE MOST touristy place we encountered. It was a total zoo. We had guests aboard who wanted to go ashore and shop, so we tried to anchor close in among the moored boats. We ended up on 2:1 scope (fortunately a very light wind night) wedged in between tourist boats on moorings. There were a few empty moorings when we arrived late afternoon, but every one of them was occupied by midnight.

Best to anchor out by Monkey Beach (on the left as you enter the big bay on the south side) and make a long dinghy ride in.

No easy place to leave the dinghy as every available inch of beach near town was full of longtails. We dropped our guests off on the western end of town by the Hospital, 10 minute walk into the center of town.

Or go around to the north side where there is a decent anchorage and not too much crazy longtail traffic. Not easy access to "town" from this side, though.



2.8 Krabi

Asia Marine Cruising Phuket Area Overview – 2020: Heading South from Phang Na, you approach Krabi and the beach at Ao Nang Bay. There you will find many resorts, shops, restaurants and nightlife spots. Just to the South is the world famous Railey Beach, protected from road access by rock walls on either side. Here you can do some kayaking or rock climbing. Further South the place is very good for diving and snorkeling.

2.8.1 Officialdom

Sail SE Asia - March 2023: Shout out for Port Takola and all things Krabi. I've just checked out at Krabi Customs and Immigration to go to Langkawi and back for yacht visa after 3 years stay in Phuket and Krabi. It was super easy with pleasant people all along the way. I'm berthed at Port Takola and the team there under Matthew Na Nagara are wonderful. The Marina Manager Moss did the harbour clearance online and I just did a quick dash to Customs and Immigration. Port Takola is a wonderfully friendly place to be and I think by far the best option for marina berth in all of Thailand. Quiet with a personal touch and getting more services all the while. The fees are great too.

Noonsite – 2020: Please be aware that Krabi Harbour officials are fining yachts that have not checked into the province

from their previous Thailand port. They have been to Port Takola Marina and fined boats 5,000B. This is an existing rule that if you leave one province you need to check out of that province with the harbour department and report on arrival in the new province.

Krabi in the past have not imposed this rule but tough times and the virus and lack of income would have given them a nudge to do so.

Phang Nga province has been enforcing this rule for some time and I believe the fines are even higher possibly double. The issue there is that the office to report to is in Phang Nga Town many kilometres from the anchorages by road transport.

All Thailand provinces can apply this rule if they want to.

2.8.2 Yacht Services

2.8.2.1 Sails and Rigging

Sail SE Asia – Oct 2024: New main and genoa from Zoom Sails made of Filmless SK99 Dyneema/Twaron membrane for performance cruising in SE Asia. Installed on Moonraker at Krabi Boat Lagoon with help from Riccardo and team at Modify Marine. Great build quality and attention to detail. Perfect fit thanks to Oljai OZ (Jai). Good team.

Second time buying a set of sail from Zoom (previous set was for the previous boat) and always happy with their design work and quality. Highly recommended

2.8.2.2 Groceries & Alcohol

There is a local open-air market.

Cruisers recommend the Makro Supermarket for provisioning. But Makro is a cash only sale, so be prepared to pay with cash. There are ATM's in the entrance.

Unless you need some specific euro type produce then Tops or Villa Market are convenient. For wine you can't beat Wine Pro. They have a huge selection, and good prices on specials. Min purchase 1 x mixed case as its wholesaler. Get beer at Supercheap any of the 24hrs ones, also great for everyday household stuff

2.9 Phang Na Bay

Asia Marine Cruising Phuket Area Overview – 2020: You can cross through the heart of the bay from Phuket to Pan Yi fishing village. An incredible sea village island made of houses atop stilts, complete with homes, shops, schools, mosque and even a market. After exploring Pan Yi you can visit at the North end of Phang Nga Bay: The James Bond Island which was made famous by appearing in the James Bond film "The Man with the Golden Gun". Phang Nga Bay is one of the Natural Wonders of the World.

2.9.1 Ko Panyee

Sail SE Asia – Dec 2019 – Good Anchorage and Warning:

Anchorage location: 8° 21.483' N / 98° 29.609' E

We were recently anchored in a river not far from Ko Panyee and while away from the vessel for several hours a thief gained entry via an unlocked hatch and stole my mobile phone and a substantial amount of cash from my wallet. It was my fault entirely not ensuring the hatches were all locked.

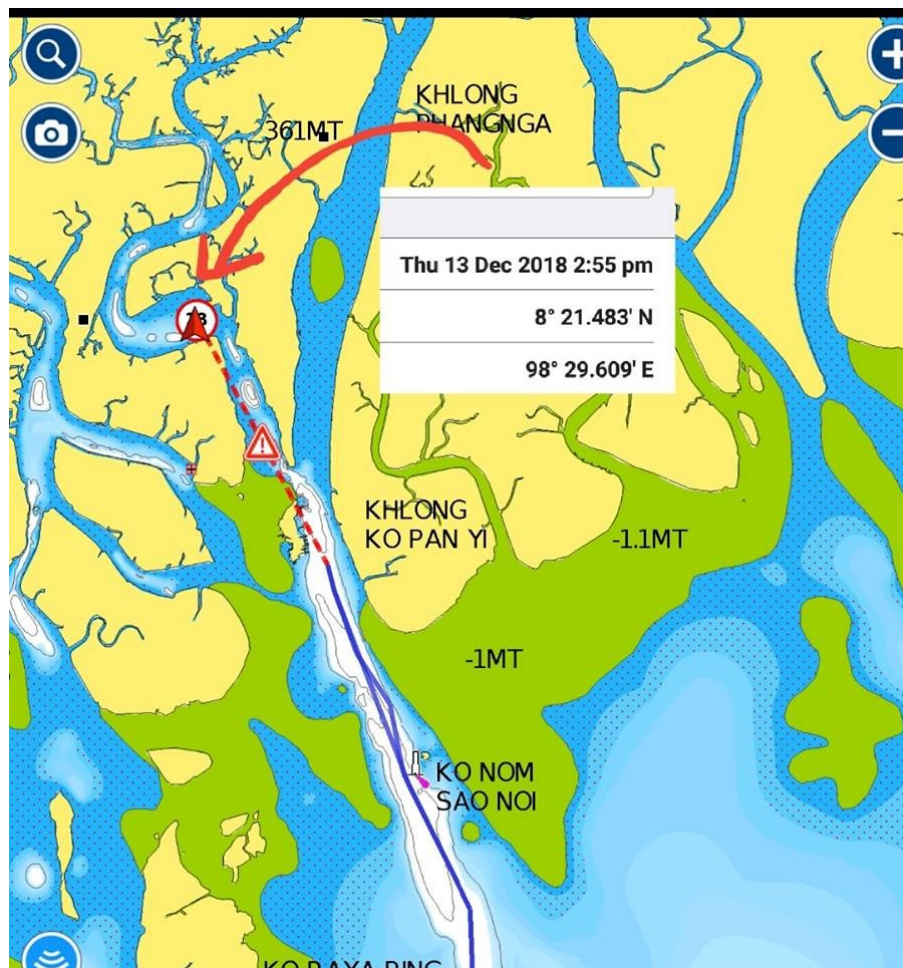
Based on the postings of others on this forum our first reaction was to put it down to experience and move on however we decided to report it to the police in Phang Nga so they were aware that there had been a problem.

What happened as a result was totally unexpected and contrary to other reports we have read about where police were disinterested or did nothing about our situation.

First of all, after explaining what had happened, they brought in an interpreter who helped us prepare a statement. Surprisingly this was handled by one of the senior officers not a desk clerk.

Shortly afterwards two people (Pack and Milk) arrived from the Tourist Assistance Centre to help us refine the report and offer their assistance. In the meantime four officers were assigned to check CCT footage at Panyee and make enquiries about a local boat that had been acting suspiciously around the time the theft occurred. They also involved a technical chap to contact my phone service provider to see if the phone could be located on the local cell network as well as through the internet

While we were about to leave feeling assured and really pleased to have been provided with such outstanding attention they stepped up the service to an even greater level. Together with



two forensic officers and three other senior personnel we were ferried back to our boat so they could check for any fingerprints. Since then we've received follow-up calls from the Tourist Assistance Centre and wait today to see if any matches came up on the police database, or if their enquiries have achieved any results.

So, while it is possible this is not a common experience, the purpose of my post is two-fold. Firstly, if you are anchored in an isolated spot ensure your boat is secure while you are absent. Secondly, don't assume the local authorities will do nothing to assist you. It may

surprise you as it did in our case.

BTW For those who haven't visited the Ko Panyee area it is one of the most picturesque areas we have visited in our sailing adventures in Thailand.

Please note that this location is frequented by local fishermen and as a courtesy we have anchored close to the entrance well out of their way so their nets don't get fouled (see attachment).

The depth is generally between 5-6 metres with drying banks on the NW side.

There is spotty or no internet (a blessing to some).

Longtails are available from Panyee to any one of three wharves in the area and it is a short taxi ride to Phang Nga to re-provision.

This is a quiet and isolated location and while word has gotten around about our experience please remember to secure your vessel. Fishermen will no doubt offer to sell some of their catch.

Above all this is a Muslim community and we ask that all visitors respect their customs for the benefit of others who may one day enjoy this wonderful region.

2.10 Phuket

Phuket is a large island on the west coast of Thailand. Phuket is a tourist mecca, and so is pretty mobbed with fly-in and sail-in tourists.

2.10.1 Officialdom

Chalong Bay is the official check-in location for Phuket. All offices are conveniently located in one building on the outer end of Chalong Pier. There is a computer to register yourself, with someone there to help you complete that process. If it's your first time arrival in Thailand, a lady will help you to organise all your papers, make copies if needed, and insert your boat data in the digital data base. This data will be sent to Harbour Master, Immigration and Customs. You will not need to fill up any forms. Only sign the forms they print out. You will understand why they say that Thailand is the land of smiles.

Order for Check-in is Harbormaster, Immigration, and Customs.

Check-in is possible 7 days a week, but you will be charged a fee for weekend and holiday check-ins.

Normal hours are ... According to posted sign Dec 2025, you must start your Check In before 14:10 and your Check Out before 14:30.

Posted public holidays for Dec 2025 were Dec 5-7, (8-9), 10, 31 and Jan 1-4.

You should make sure your AIS is on, all crew must attend check-in. Bring a picture of your boat with the name showing (electronic on your phone is OK), Customs will want a copy of it.

2.10.2 Yachtsmen's Services in Phuket

Most of the Phuket Marine services are listed in Section 1 [Yachtsman's Services](#).

Dinghy Repairs & Dinghy Chaps: [Cholamark](#)

2.10.2.1 Marine Stores

Soggy Paws – Feb 2024: There are a number of good chandleries in Phuket:

East Marine Asia (Boat Lagoon) <https://eastmarineasia.com/>

AME Marine (Boat Lagoon) <https://amemarine.com/>

Keehin (Mid Phuket Somewhere) – A very large “Home Depot” type place with also a chandlery inside. <https://www.facebook.com/keehinpk/> <https://maps.app.goo.gl/su7DWCRcWQZknM7E6>

Wayne's World – A used boat parts place near Boat Lagoon. Has a LARGE array of second hand boat parts (salvage stuff, mainly). However the owner values his junk much too high. Every time we found something there and priced a new one instead, we opted to pay just a little bit more for new, or go without. Would do SO much more business if prices were compatible with use boat junk prices. <https://maps.app.goo.gl/ZEEvfMrWmm9wQvdS7>

2.10.2.2 Refrigeration

Whatsapp – Feb 2026: Neow. Vitamin Sea Marine. Trained Aircon guy speaks good English. Always busy but call him - mornings best. Workshop near Airport but visits all Marina's and will come to anchorage. +66 84-306-9410. korakot_nakchuay@hotmail.com

Nathan Whitlock +66 83 550 6411

2.10.2.3 Electrical

Jan 2026 – Andaman Electrical Marine will come to the boat at Yacht Haven or Boat Lagoon.

aem.andaman@gmail.com

2.10.2.4 Laundry

Laundry – Chalong: This is easy walking distance from the pier and is quiet

https://maps.app.goo.gl/ioKicAknw3M83sdU6?g_st=ipc

2.10.2.5 Liferrafts

Jan 2026: We've just had a great experience purchasing a new life raft in Phuket and wanted to share in case it helps anyone else.

We were really impressed with Ed and his team at Matchanu Marine. Ed's English is excellent, communication was easy, and nothing was ever a problem. They collected our old life raft, opened it in front of us (which revealed some not-so-good news 😞), gave us a fair and honest price, and then delivered the new raft promptly.

Overall, it was a seamless, stress-free experience and we wouldn't hesitate to recommend them.

Call Ed: +66 868025032 <https://maps.app.goo.gl/mPjnygaEETXmMpW39>

Liferaft Inspections: Matchanu Marine Phuket Co.,Ltd, service Fire Fighting and life rafts. Had them annually for 10 years. Very professional. <https://www.matchanuphuket.com/>

Please to say they carefully take down the raft even when on the hardstand. You can specify what items you want repacked.

Also Cholamark: <https://www.cholamarkboat.com/life-raft-service-inspection>

2.10.2.6 Sails and Rigging

Rigging: +66 95 105 1943 Jai, highly recommended.

2.10.2.7 Engine Repair

Mar 2026: It is with pleasure that I give credit where it is sorely due. If you need a good diesel engine mechanic in or near Phuket, you can do no better than Jeffrey, an American expat based in Phuket. (WA +1 (206) 954-3772). He is reliable, experienced, communicates well, and from what I hear, charges reasonably. I can't say from experience because he wouldn't let me pay him for more than two hours over the course of three days patiently explaining how to get water out of my engine (parts where it doesn't belong) while stranded at Koh Phi Phi. He walked me through everything, and offered to come to the boat if we couldn't resolve the problem via

internet. He will also come down to Langkawi if needed. He's a real pro in a part of the world where they are few and far between!

T&T Mobile Marine (Paul) Mobile +66 (62) 649 8235

<https://www.ttmobilmarine.com/>

Dec 2023: We had Paul from T&T do repairs on a starter. He speaks pretty good English.

C & C Marine in Phuket (Craig) - <https://www.candc-marine.com/>

Oct 2025: I used C and C recently for some work on my Yanmar sail drives. They were very knowledgeable and professional.

W Tech Marine Services (Jai)

215/33 Moo.1 Pakhlok, Thalang, Phuket 83110

+66 (0) 83 505 2783

info@wtechmarineservices.com

Oct 2025: We have just had a rebuild done by chap called Jai who we found very good, had been a Volvo engineer now runs his own company - Wtech Marine Services. Came up to Yacht Haven. Would highly recommend Jai - meticulous speaks good English and uses Whatsapp +66 83 505 2783

YSE Marine (located Boat Lagoon)

<https://www.ysemarine.com/>

PME (located closer to Ao Po)

<https://www.pmevolvo.com/>

Oct 2025: Both YSE and PME are certified Volvo dealers and carry parts.

Some Others:

Bow Patriot Mechanic Phuket - [Mobile] +66 994824654 – Highly recommended.

Try Neow on phone and Whatsapp +66 84-306-9410. Good mechanic and also brilliant at electrics and electronics- great all round guy.

Diesel Engine Parts: C & C Marine in Phuket <https://www.candc-marine.com/>

Also, Yanmar Parts available from Singapore:

<https://www.cils.com/product/yanmar-spare-parts/>

The US (Yanmar, Volvo, Beta, Universal): https://shop.toadmarinesupply.com/ships_store/

And the UK: <https://parts4engines.com/>

2.10.2.8 Woodworking

Woodworking: Wanted to give a shout out for Nai at Phuket interior woodwork. She does excellent work for a fair price. If you need any woodworking done, we can highly recommend her and her team. +66 81 970 2687

2.10.2.9 Provisioning

Jan 2025: Delivery / Online Ordering

* Villa Market (VM): Easy online ordering, reliable delivery, often same-day. Within the hour at extra costs. <https://shop.villamarket.com/>

* Tops: Very straightforward, fast delivery, same as VM - express delivery at extra costs.
<https://www.tops.co.th/en>

* Makro (MakroClick): Good for bulk, but deliveries can be 1–2 days late. Many fruits/veg have 0.5–1kg minimums online; smaller amounts only in-store.

<https://www.makroclick.com/th>

Jan 2025: Phuket Fruit & Veg shopping

Patong / Phuket Town

* Banzaan Market (11–19h) – Best all-round mix of quality + convenience

* Phuket Town Fresh Market (10–18h) – Best local prices & biggest variety

Chalong Bay

* Rawai Market, Mon/Fri (15–20h) – Best for fresh herbs, fruit & ready meals

* Makro Chalong (06–22h) – Best bulk prices & consistent quality

* Villa Market (8–21h) – Best for Western/imported produce

RPM / Boat Lagoon

* Supercheap (08–22h) – Best for low-cost staples & big selection

* Makro Bypass (06–22h) – Best value for provisioning large quantities

* Phuket Town Fresh Market (10–18h) – Closest big true Thai market

* Villa Market (8–20h) – smaller than Chalong but easy delivery to boat in marina

Ao Po Grand Marina

* Pa Khlok Market (~11–17h) – Best nearby option for fresh daily veg

* Thalang Market (~11–18h) – Best full-size market near the NE coast

Yacht Haven

* Mai Khao Market (~12–18h) – Best quick stop for basics + fruit

* Thalang Market (~11–18h) – Best variety without going to town

Tips:

* Markets open late → best shopping is midday–afternoon.

* For early provisioning: Makro.

* Markets = cheapest. Makro = bulk value. Villa = imports.

Cruiser's Comments:

- Makro best without question overall. I have no trouble buying individual cartons. Best veggies, best cheese selection for price. Accepts only cash (ATMs outside the store). Appears to require a membership card, but when asked, we just said “no” and they rang us up anyway.

- If you want quality specialist cheeses or wines, WinePro. Minimum purchase quantity for wine is 1 case. They sell all day with no silly cut off times.
- Villa Market – walking distance from Chalong but veggies awful and expensive.
- Big C in Patong is pretty good. Otherwise Makro is good.
- There are at least Makro's on Phuket, Rawai (near Chalong), Central (Phuket), and Thalang, near the airport. Macro Thalang is bigger than the rest. Phuket is next.

2.10.2.10 Medical Services

Hospital Comments Jan 2026, from various people, after someone asked for a recommendation for a crew member with an infected cut.

- I've not been to **Chalong Hospital** myself but as a government hospital it's considered cheap with long(ish) waiting times. However, reviews regarding facilities and service are mixed and language sometimes can be an issue.
- I can highly recommend **Mission Hospital Phuket** from multiple personal experience - it's a private hospital but still reasonably priced, with great facilities & English speaking staff (at least an in-house translator if needed), & generally shorter waiting times.
- We've used **Bangkok Hospital Phuket** in old town several times and very happy with them
- Although Bangkok Hospital (BHP) is great, it is pricey & has been 'blacklisted' for overpricing by several insurances. We pay & claim back & in my experience & in comparison to Mission Hospital BHP is way more expensive. It's not been 'blacklisted' (along with other hospitals in the region) for nothing - still they do provide excellent medical service - just at a higher price point.
- I recently went to the Chalong hospital and experienced a short waiting time. There was also no language barrier. The reception, nurse, doctor, pharmacist all spoke English. Happily recommend it.

Dentist Comments Dec 2024:

- Nava dentist, been there a number of times, teeth clean, veneer, crown. All good.
- We've had implants, crowns, cleaning at Rang Hill Dental Clinic. Highly recommend.
- We visited Sea Smile in Patong and are happy with the result.
- Try the one at Boat Lagoon, we have been there 4 times now. Not expensive, in Australia we would pay 4 times the amount, and it's not worth messing around with flights. But you will need to book. Tooth Therapy Phuket - +66 93 579 2399 on what's app

2.10.3 Chalong Bay

Zazen - July 2024 – Ko Lon Anchorage: During the SW monsoon, there's a good anchorage on the N side of Ko Lon Island in the middle of Ao Chalong Bay, between Ko Lon and Ko Thanan, the little island on the N side of Ko Lon. No cars or roads or shops, and many small deserted beaches.

July 2024 – Water: You can get water on the Pier at the Fuel pump... Very Busy.

There is also a water station west of the pier. Is a small floating house, yellow and red with car tires around it. They have moorings for a stern rope. No one uses them. You just go down the wind/currents side and pass him a bow rope. They will pass a very long hose...big and strong

pressure. Ask them to calibrate the pressure the way you want--take care to not explode your tanks. The meter the water you use and have a long bamboo pole with a net to pass you the bill. You then put the money inside for them. It is very cheap. I got around 360 liters and charged me 160 Baht (about \$4 USD). Better to go mid morning after all the local boats are out of the harbor.

I have never gotten bad water.... I do have a clear filter case and never notice anything bad in it. I don't know if the water is from the city pipe or not. Could be that it was dry season and they were pumping from the bottom of a well or something. All the live on board charter boats get water there... The Fuel Blue boat also gets the water he sells there.

Note: **This is NOT Drinking water.** No water in Thailand is good for drink... You need a good filters system to drink it. In Phuket it is very bad because a big part of the water come from old Tin Mines.

Phuket WA Group – April 2024: If you have a strong dinghy then it is very comfortable on the Eastern side of Chalong Bay. On our chart it is indicated as Khao Khat. There is a reef around the beach which is exposed during low tide. Holding was very good and not too many boats.

For provisioning we went to Chalong Pier and tied to dinghy dock.

We bought Petrol and diesel from the pier. Prices were the same as the pump in town. They have water too, but we never used it so cannot comment.

On our way back, we used the pink bus to take us out to the end of the pier where the dinghy dock is, but you need to pay THB10 per person.

2.10.3.1 Things to Do

Enchantress – July 2023: I have a great place to recommend in Phuket. It is the Dinner Cabaret right next to Ikea store. Unique in Phuket, guarantee to enjoy. Disclaimer...I was affiliated with the show for 9 months and now friends of the owners. It is such great entertainment I try to support it. Ask for a front table if it is possible but they are all good. Easier to get with a group.

2.10.4 Nai Harn Bay

Soggy Paws – Feb 2024: Nai Harn Bay is a favorite yachting hangout, especially in NE season. There is a small **dinghy dock** (rickety floating blocks) in the NE corner of the bay (at On the Rocks Bar & Restaurant), that makes leaving the dinghy easy, but it comes with a hefty 150 Baht fee (about USD \$4.50) per day. When the swell or chop comes in, the dock moves quite a bit, and several dinghies a season untie themselves and go floating off. It's always crowded during NE season.

The beach at Nai Harn is beautiful but it is covered with tourists. You can leave your dinghy on the beach, but when it's swelly, there can be breaking waves. And there's always the issue of an unattended dinghy on the beach with lots of people around. Likely not much problem during the day, but could be an issue late at night.

Entertainment: There are many eating places on the beach, some quite inexpensive. Sometimes there is music at one or another of the bars along the beach.

Groceries: There is a tiny store at On the Rock, and a fruit stand or two near the parking lot. And a 7-11 that's a 10 minute walk away. Most people go into Chalong for provisioning runs. A "Bolt" or "Grab" into Chalong costs around 300 Baht.

2.10.5 Kamala Bay

2.10.6 Bang Tao Bay

Soggy Paws – Jan 2024: This is a beautiful bay, but the south end is lined with hotels. At the north end of the bay is a nice anchorage off a park, where you can pull your dinghy up on the beach in front of a life guard stand. We got Grab/Bolt drivers to come pick us up at the entrance to the park (about a 5 minute walk). Anchorage 08° 01.67' N / 098° 17.18' E in 5m Sand.

2.10.7 Ko Phyam

2.11 Similian Islands (Park)

Unlike other marine national parks in Thailand, private yachts must first obtain a permit in advance before entering the Similan National Park. This is due to a cap on the number of yachts allowed in the park each day. The permit can only be acquired from the Similan National Park's headquarters, located on the mainland near Khao Lak at Thap Lamu (8° 34.378' N 98° 13.435' E). Visitors will need to first arrive by dinghy at the pier and then it's a 10-minute walk to the headquarters.

You do need to pay the park fee and get permission at Park Headquarters in Thap Lamu. They also give a phone number "You are recommended to ask a Thai speaking person to call on your behalf. There are English speaking staffs to answer the phones but the English level is basic. +66 (0)76453272"

According to the website, the park is closed from May 15 to October 15.

Details in English here: <https://www.thainationalparks.com/mu-ko-similan-national-park>

Olena – December 2024: Similans, we just went to the Park office at Ban Thap Lamu this morning.

They informed us that the rule is, that only divers are permitted to stay overnight. Not possible to make bookings from distance. They checked our Dive licenses.

Sail SE Asia - March 2024: You must have prior permission to visit this National Park. To get permission:

Visit the Similan Park Headquarters at Ban Thap Lamu, which is about 15km south of Khao Lak. You can anchor there.

The office is open from 6am to 6pm.

They want to see and copy (or print) your boat papers. They need the names, age & passport numbers of the crew/passengers.

500 baht per adult

250 baht per kid till 14

100 baht per day for live-aboard boat

1000 baht per night for boat overnight

If you plan to dive:

200 baht per diver per day. You even have to choose the diving days and the dive spot while buying the tickets.

It's not allowed to anchor, they don't give any information. There is a map with some diving spots but none with moorings. But you'll see moorings at many places in the park, some red ones being even too shallow for cruisers, so check well.

The islands number 1, 2 and 3 are protected and we're not allowed on shore.

More info here:

<https://go2similan.com/similans-surins-national-park-fees-entry-requirements/>

2.12 Surin Islands (Park)

2.12.1 West Side Anchorages/Moorings

Soggy Paws – Feb 2024: The Surin Islands (two islands close together) are a national park. This park DOES NOT require prior permission. When you arrive, you may be approached by park officials and asked to pay a fee.

There are moorings in the park set up for cruising-sized vessels. We picked up a mooring at 09° 26.47' N / 097° 51.39' E in the NW bay, and spent a couple of nights on the mooring before moving on to the bay just south.

We were surprised to find quite a camping area, just full of tents, plus a bathroom/shower block. There are also concessionaires there selling food at meal times.

When we arrived in the southern bay on the west side, all the moorings were taken, so we anchored carefully in about 50 feet in a large sand patch at 09° 25.638' N 097° 51.409' E

There is a good snorkeling/diving spot around 09° 24.97' N / 097° 50.81' E (SW of the moorings/anchoring area). You will see local boats going there with tourists. You can take your dinghy and tie off to the line there. We did a dive from our dinghy out away from the snorkeling area, and it was pretty good.

Sunsail Cruising Guide: The Western anchorage is in the bay between the two islands. The channel between the two islands is very shallow and yachts cannot pass through it. On the North side of the channel on the Southern tip of Ko Surin Nua is the National park Headquarters with bungalows and a restaurant.

The Northwestern anchorage in the western bay of Ko Surin Nua is a great spot for a quiet night under the stars. Anchor in 12 to 15 metres.

Sloepmouche - February 2020 – SW Anchorage: 15m sand, no beaches around. Convenient stop before heading back to mainland. No internet. 09° 23.361' N / 097° 52.109' E

2.12.2 East Side Anchorages/Moorings

There are moorings all over the east side of the Surin Islands. There is also a dock of sorts so boats bringing tourists can drop them off. Mooring balls are different colors and sizes for different sized boats. Everything from large liveaboard dive boats to small 2-person longtails

use the moorings for tourism. Almost every Thai boat will be constantly attended, so they are not too worried about how well the mooring will hold up in wind and seas—they just drop the mooring and move. Do not assume that all moorings are suitable for an overnight stay for a cruising boat!

Soggy Paws – Jan 2024: We picked up a mooring around 09° 25.47' N / 097° 53.797' E. There are several moorings here in deep water. The rangers don't seem to come out this way, and we saw only one tourist boat come out with snorkelers. Much less traffic than elsewhere in these islands.

2.13 Ranong

Ranong Tourism Site – 2023: Ranong is the most northerly province on Thailand's Andaman coast, located 568 kilometres from Bangkok. Ranong is known for its long rainy season, which lasts for 8 months each year. A mountainous and heavily forested province, Ranong is best known for its capital City of the same name, which serves as a major Fishing and trading port. It was originally settled by the Hokkian Chinese, and their strong influence remains evident in the town. Ranong town is also a gateway to Myanmar, with colourful longboats ferrying produce and people across the narrow divide that separates the two countries. The traffic is even heavier these days since a casino opened at Victoria Point in Myanmar. Just outside of Ranong town are the famous Ranong hot springs, where an arboretum and various first-class hotels cater to visitors eager to benefit from the medicinal properties of the mineral waters.

Visitors should not miss these attractions when visiting Ranong:

- Ranong Governor's Grave, the Chinese grave of Phraya Damrongsucharit Mahisornphakdee (Kho Su Chiang), the Ranong's first governor. The grave land was dedicated by King Rama V, located on a small hill. Both sides of the grave are 15-meter-high ancient stone dolls. The grave is near waterfalls and Souvenir shops;
- Ton Phet Waterfall, the 11-level beautiful waterfall with all-year-round cascades from the source of water from Phota Chong Dong mountains which is the highest mountain in Ranong; Ngao Waterfall, located in Tambon Ngao which is now the area of Namtok Ngao national park. The water flows down from the high mountain ridge, so it can be seen from afar. Panda crabs, the latest-found crab species in the world, can be found in the waterfall area;
- Phukhaow Ya (grass hill) or Khaow Hua Lan (bald hill) or Khao Phee (ghost hill), the treeless hill with green grass. In the rainy season, the hill becomes lush and hill, but in summer, the grass dies, and the hill becomes brown
- For a real off-the-beaten path Thai island, Ranong's Phayam is one of the least visited in Thailand.

Victoria Point or Koh Song is an Island in Myanmar with the Kraburi River separating between Myanmar and Ranong. It is the centre collecting Local products such as Jewellery, wickers, Myanmar's lacquerware. Tourists can take a long-tailed boat to Myanmar with the ticket price 200-300 baht. Before going to Myanmar, you have to go to the immigration office first.

If visitors fancy to spend a few nights on an island, Koh Phayam is good choice. It takes about 1-2 hours from the pier at Ranong estuary to the island. The island is known for its white sandy

Beach and a place for planting cashew nuts. A number of sea gypsies live on the island, and you can rent a private long-tailed boat for 1000 baht to go back to the mainland.

Some don't-miss festivals are Phra Tham Phra Khayang Fair, the fair is held during Chinese New Year's Day for 3-7 days. People can go to Khayang Cave to pay homage to holy things; Ga Yu Fair, every March is the time when Ga Yu trees or cashew nut trees are fully ripe; Image Boat Procession and Races, boats will be beautifully decorated, and the Buddha image will be placed on the boat. The boat will be paraded along with the Kraburi River community.

2.13.1 Diving

Padi.com – Mar 2023: Diving in the province of Ranong Thailand is known for untouched sites with few crowds. It's possible to dive here for a week and not encounter another boat. Ranong's marine creatures are not yet tamed by the presence of divers so behaviours you see are lovely and natural. This precious experience is becoming rare.

Whale sharks, manta rays and bowmouth guitar fish hang out on deeper seamounts. Drift along with shrimp and pipefish as barracuda and mackerel hunt and frogfish take a walk. Eagle rays swoop, nurse sharks shelter and leopard sharks rest on the sand.

Deeper sites have strong currents, but huge sea fans and tunnels filled with glassfish are a visual feast for experienced divers. Small offshore islands swirl with life, while divers lap up deep drop-offs and pinnacles. Diving in Ranong is a wild ride.

3 Thailand's East Coast, S and W of Pattaya

Organized south to north up the coast from E Malaysia.

3.1 Songkla

Songbird – July 2017: On our way from Redang, Malaysia to Koh Samui, we stopped for one night in Songkla. We were a bit disappointed with Songkhla as the river didn't have any anchorages that we were comfortable with so we ended up just to the southeast outside the river wall. Holding was very good in sand and we had a comfortable night despite fishing boats regularly passing close by.

Schnuckelputz - 1998: 7°14N 100°35'E. Busy fishing port, well buoyed if you want to go in. Lots of boat hardware available. If you don't want to do Immigration here, you can anchor off, dinghy in and get tuktuk to town. Inside the harbour there is nowhere to leave the dinghy so you need to flag down a long tail boat. European prices are applicable! Very nice town. A low lying piece of coast along here, and you can anchor practically anywhere. There are many fishermen to watch out for. Tide changes at Songkla. Now Incomings flows north and Outgoing flows south.

Note: "Schnuckelputz" often goes all the way from Pulau Perhentian straight to Ko Samui. Takes about 3 days and 2 nights. Course is well away from the coast and the fishermen and avoids some of the tide influence and drift nets. Generally follow the two lighted small islands on way up.

Krios - 1997: Anchored in opening between Ko Katen & Ko Mat Sum, S. of Ko Samui. (09°23'N, 099°58'E).

3.2 Koh Samui

Sail SE Asia - Sep 2023: Now that we have departed Koh Samui, I am finally comfortable talking about this. Yachties, do NOT store your tenders on the beach on the west end of Ao Bophut. We returned in the morning after arrival, a month ago, to find our dinghy with seven (7) holes made by a rusty nail in all tubes of our tender. Not a friendly place to bring your tender ashore.

This is NOT a “do not visit Koh Samui” warning. Please, read carefully. Koh Samui is an amazing place to enjoy as a sailor. I am advising yachties to not bring dinghies ashore at the west end of Ao Bophut.

Response: Mid-beach at Bophut and there is an amazing sea sport kiosk in front on Hansar Resort run by the friendliest Thai lady (Khun Mooiy) who helped us for 4 weeks keep our tender safe and treated us so well. Can't say enough good things about her and her team.

July 2017 – Songbird: Redang, Malaysia and Ko Samui, Thailand. We have just done this trip from north to south. We left for Samui from the anchorage off Ko Katen and had a brisk sail in 15 knots of wind funneling between the mainland and Samui. During the morning the wind slowly died and we motored most of the afternoon in glassy waters. We could see storm cells further south and at 5pm we headed to shore and anchored in about 6.5m on sand and mud. We saw a number of dolphins on the way into the anchorage, including one that was completely pink. We had a little difficulty setting the anchor but had a 25knot squall come through just before dark and we didn't move. Our anchorage was 71nm from our start point that morning and we were in front of a seemingly endless line of wind generators stretching to the south with their flash red lights in sequence clearly visible throughout the night.

The next morning we headed to Songkhla, a distance of 60nm. We sailed or motor sailed the full distance with the only incident occurring when we were caught with a full main and headsail in a squall that saw the wind go from 8 to 28 knots in a heartbeat. When it then climbed to 37knots we had little choice but to run down wind to keep our mast upright. Unfortunately this meant we had to turn toward a couple of fishing trawlers which we then could not see because the rain reduced visibility to about 200meters. In the end no harm was done and when conditions cleared they were well in the distance behind us. (I know we should have reefed earlier and had our radar running).

We were a bit disappointed with Songkhla as the river didn't have any anchorages that we were comfortable with so we ended up just to the southeast outside the river wall. Holding was very good in sand and we had a comfortable night despite fishing boats regularly passing close by.

On day 3 we travelled around 76nm mostly motorsailing although we spent the last 4 hours just motoring when we were caught in a slow moving squall/storm that just would not let us go. By 5pm we were tired of it so we turned to shore and anchored in very calm water off the beach in just over 5 meters on sand. Apart from local fireworks associated with the end of Ramadan, we had a very peaceful night.

The 4th and final day was all motoring before crossing back into Malaysia and anchoring in the channel at the Perhentlan's (80nm).

Schnuckelputz - 1998: Chaweng Beach is the "tourist" beach. Very noisy. Anchor on northern side. Go to Nathon (by tuk tuk) for shopping and Customs and Immigration. Good shopping here, can get anything you want.

Krios - 1997: The main recreational establishments and beaches are on Samui's east and northeast coasts. We skipped the surfy Larnai Beach and went farther north to the Imperial Hotel, Chawang Noi (09°30'N, 100°03'E). The friendly Dutch manager invited us to use all facilities. In order to get fuel from a gas station close by, we anchored near a wooden dock (09°35'N, 100°00'E) at Mae Nam in the north. They deliver by truck.

3.3 Koh Pha Ngan

Schnuckelputz - 1998: Anchor at top of island at Tong Naipan. Can also anchor at Hadrin (Avoid Hadrin at full moon there are midnight parties on beach with lots of white tourists misbehaving and doing drugs!) Has ferry. Good shopping.

Krios - 1997: Much less developed than Samui, the backpackers take advantage of the lower prices and more primitive lodgings in the majority at Aow Rin Nok, Thong Reng (09°45'N, 100°05'E), Thong Nai Pan and Hat Khuas, which have pleasant anchorages.

3.4 Koh Tao

Schnuckelputz - 1998: 35 miles from Koh Samui. "The" place! - best scenically and diving. Mooring buoys available. Wait till dive boats go. Great snorkeling and restaurant food good and reasonably priced. Stores are expensive at Koh Tao.

Krios - 1997: Koh Tao is considered a paradise for divers, due to the deeper water. There is one particularly protected spot, advertised as the "only place in the world with three joint beaches" (a sandbank that connects Koh Nang Yuan to two other ones).

3.5 Pattaya / Bangkok Area

Songbird – March 2017 – Pattaya, Ocean Marina: Very secure marina with good facilities. Has good range of boating shops and workshops, (run by EX Pats from Australia and UK). Chandlery, Sail loft, Engineers, Haul out yard and work crews.

Quite expensive for Thailand. Haul out facilities good, although not great to live onboard if out of the water. (fair amount of cheap accommodation available not too far away). If hauled out, be aware you still need to pay for your wet berth as well.

About 10km from Pattaya city but main road just outside marina and local Songtow is cheap to catch, with Tesco and Macro along the way.

Clearing In and Out of Thailand in Pattaya is quite a challenge. They are not used to yachts here. You can use an agent to assist, but they are quite expensive, so we did it ourselves. Hired a motorbike, rode to the other side of the main town and finally found the Marine Office (Harbour Master), only to be told that it has to be done online. Tried to do this, but it is all in Thai, so had to find someone fluent in Thai to assist us.

Immigration office is in the main town. We were there first thing in the morning with the right paperwork, but got charged a fee, plus an Overtime fee (9am in the morning!!). Then to

Customs which is at the airport, 50km south of Pattaya. No one spoke English, but they were very helpful and friendly. Whole process took 2 days!

Clearing out, was similar. Harbour Master stuff done online but still need to go to their office and pay a fee. (200Baht, but fee varies daily).

While in Pattaya, definitely go to see the Sanctuary of Truth Temple. Just north of Pattaya and a mixed denominational temple hand made all out of wood. Simply stunning! Also the quiche Norng Nooch Park south of Pattaya.

An incredible and indescribable place. A MUST see!

Schnuckelputz - 1998: Pattaya is a 2 day journey from Koh Samui. It is always a bit rolly, and very dirty- no sewerage system. Islands around Pattaya not very exciting. However, it is a safe anchorage, and "Schnuckelputz" was left on anchor for a couple of days in order to visit Bangkok.

A little south of Pattaya is Jomtien Beach which is cleaner but water scooters are out from dawn till dusk.

3.6 Koh Lam & Koh Kram (Just S of Pattaya)

Songbird – March 2017: KOH LAM and KOH KHRAM, south of Pattaya are off limits to go ashore as they belong to the Thai navy. You can anchor in the bays overnight if needed.

4 Thailand's East Coast, E of Pattaya

Organized W to E from Pattaya to the Cambodian border.

4.1 Koh Samed

Songbird – Mar 2017: 12 34.790N 101 27 399E North coast

Popular ferry day trip island from mainland and also popular weekender for boat owners from Pattaya and Bangkok. Quite touristy with lots of resorts and restaurants. Still has nice feel to the place. Anchored in 5-6m on sand.

Schnuckelputz - 1998: Beautiful beaches. In 1993 dirty ashore.

4.2 Chantiburi

Schnuckelputz - 1998: Famous for gemstones. See lots of Cambodians here. You can go to Klong Yai at the border with Cambodia, but it's more a border crossing for local people, not foreigners. "Schnuckelputz" didn't go to Cambodia.

4.3 Koh Chang

Exit Strategy – Feb 2026 – Checking Out of Koh Chang: Just did the domestic checkout (which is a requirement nowadays in Thailand) with our ship in Koh Chang.

Maritime Department: did it online and called the harbour master of Laemn Gob. Very soon later the application was approved. Needed to pay THB20 online and the portclearance was available.

Today morning even the harbour master called me in person and asked whether all was done alright yesterday by his staff!

Other step was immigration in Koh Chang. As always, very friendly and helpful, even when the procedure for our request was quite unknown by the officers. They tried and did it well. Even offered us coffee and all the process was like sitting with aunty and uncle. Had to pay THB 410 for the checkout.

I like how the authorities are working there. Nice, friendly, helpful.

Please consider when you need anything from that places, don't disturb the hospitality of those officers by any rough behaviour. Keep and protect this friendly community around Koh Chang. They are a good role model for many other places in this world.

Songbird – Mar 2017: 11 58.647N 102 22.790E Salak Phet. Southern side of island. Deep bay.

Map shows shallow, but we went half way into bay and anchored in 4-5m. Anchored near jetty with half dozen other yachts, some on moorings. These belong to Gulf Charters, who also work from Pattaya and Koh Samui. (Their web site has excellent guide for these waters.) Small German restaurant at end of the first pier. Small marina further into bay, but believe it can get quite shallow. Stunning mountainous scenery around bay.

Songbird – Mar 2017: 12 08.523N 102 15.512E Ao Khlong Son. Northern Bay.

Anchored in 4m in large bay. Dingy upriver at SE corner and up to a newish marina. Sadly, the river is very shallow and even in high tide, it would be difficult to get to with a yacht. Small town here and main road to get to main town on island. Apparently there is a bigger and better marina on the north side of the island.

Schnuckelputz - 1998: is a large island not far from the mainland and is in the Province of Trat. The only decent anchorage is right at the bottom of the island. Across the channel on the mainland is Laem Ngob, which is a shallow anchorage and you have to keep some distance out. From Laem Ngob buses run to the main town of Trat where there is an excellent market and supermarkets - cheap compared to the tourist islands of Phuket and Ko Samui. Laem Ngob is the take off point for ferries to the outlying islands. There is a large fishing fleet unloading "live" fish for Bangkok. A few restaurants at Laem Ngob, but no real shopping. There is talk of a bridge being built to connect Ko Chang with Laem Ngob.

4.4 Koh Mak

Songbird – Mar 2017: 11 48.565N 102 27.736E South bay

Quaint, slow paced village. Few cars, mainly motorbikes and bicycles. Almost hippy feel. Mostly backpacker accommodation. Lots of small restaurants. Can anchor on north side of island but we didn't.

Schnuckelputz - 1998: Is a 5-6 hour trip, weather permitting, from Laem Ngob. Very nice anchorage on NW side but if a strong NE blowing then a large swell rolls in. In NE monsoon there is a good anchorage on the South side. If very windy then it's impossible to go to Laem Ngob.

4.5 Koh Kut

Songbird – Mar 2017: 11 35.464N 102 33.925E Ao Phrao Beach

Anchored in 5m on sand. Resort on beach with mostly European tourists. Dinghy up river to school and small Buddhist monastery. Some small nice restaurants inside river mouth.

Songbird – Mar 2017: 11 36.731N 102 31.977E Bang Bao Bay

One of our favourites! Very sheltered from all but West wind. 5.7m on sand. Good holding. Half dozen resorts along beach. Very pretty. Restaurants onshore. Can hire motorbike to see island.

Next bay north (went here by dinghy), Ao Khlong Chao

Take dingy up river, close to end, go ashore and walk last few 100m to waterfall for nice swim.

5 Thai Words for Sailors

From US Sailing Directions Pub 161, Glossary

Chinese

English

A

an.....embankment, bank, shore, coast cliff

an-chiao..... submerged rocks, reef

anjiao..... sunken rock

anshashoal, sandbank

ao.....bay, cove, inlet, dock

B

bandao..... peninsula

bei..... north

bi nose

bodi anchorage

buvillage

C

cao..... channel

cha.....lock, dam, floodbarrier

chau.....see chou

chao.....bog, marsh

chen.....town, market town

ch'eng city, walled town

chi.....obstruction, ledges in river

ch'i.....stream, river, head, cape, point, mountain, seven

chia.....cape, bluff

ch'ia.....customs barrier
chiang..... river, shoal, harbour, port, inlet, channel, sound
chiang-tao.....channel, strait, sound
chiao.....creek, rock, reef, shoal, islet, cape, point
ch'iao..... bridge
chien.....mountain, peak
ch'ien..... shallow, shoal
ch'ien-lai..... bank, shoal
ch'ien-t'an..... bank, shoal
ch'ien-tuibank
ch'ih.....pong
chih-chiang-taoreach
ching.....capital, city isthmus, ford, ferry
chiu.....nine
cho.....see chou
chou..... island, bank
chow.....see chou
ch'uanstream, river
chuang.....village
chueh.....cape, point
chung.....middle,centre
ch'un-tao..... archipelago, group of islands
chu-tao archipelago, group of islands
cun.....village

D

da.....big, great
dao.....island
daozi.....island
diantan.....patches
ding.....top
dizui landspit
dongeast

E

erh.....two

F

fangbodi..... breakwater

feng..... mountain, peak

fou..... port

fu..... province capital

G

gangport, harbour, mound, hill

gangchi basin

gangkouport, harbour

gaojiaopromontory

guanchang..... square

H

hai sea, gulf

haibinbeach

hai-ching..... strait, channel

haidisea wall

hai-hsia strait, channel

haikousea mouth

hai-k'ouchannel entrance

hai-pin.....seashore, beach

haiqu water area

hai-wanbay, gulf

haixiastrait

hangdao.....fairway

hang-lu.....fairway

hangmen pass navigable to ships

he river

hei black

ho river, waterway

hourear

hsiwest, mountain, stream

hsia.....strait, gorge, lower

hsiang.....rural area, village

hsiao..... small

hsien.....district, district capital

hsin new

hsu..... island
hsuan.....eddies
hu lake
huangyellow
hungred
J
ji..... village, town
jia headland, point
jian top, peak
jiang river
jiao reef
jiaopoint, cape
jiestreet
jiuold
K
kan.....dry, harbour, port
kan.....see chiang
kang..... mound, hill
kao.....high
kao-chiao.....promontory
kao-juanplateau
kau.....see k'ou
kiang.....see chiang
kiao.....see chiao
kou or k'ou ..mouth, river entrance, port, inlet, ravine, gully
kow.....see kou
kuvalley
ku-k'ouravine
kuan.....barrier, customs
kuo country, kingdom
L
lan.....reef, blue
lanjiangshabar
lao.....old
ligravel, shingle, inner

liedao.....group of islands
lieh-taosee liedao
lieh-yeh group of rocks
linforest
ling ridge, mountain, mountain range
liustream, current, six
luroad

M

man.....seemen
maodi anchorage
mao-ti.....see maodi
men.....gate, pass, channel, strait
miaotemple
mu trees, wood, grave
munsee men

N

nan.....south
nei..... inner
nei-ao basin
n'i.....mud

O

osee ao
ousee ao

P

pa..... embankment, quay, eight
pai.....reef, white
pangsee peng
pan-tao see bandao
paotown village, rampart
p'ao-t'ai..... port
peisee bei
peng creek
pi..... cape, nose
piaorock, islet
p'ing-chou level shoals

p'o arm of the sea
 po-ti..... roadstead, anchorage
 puvillage
 p'uinlet, creek, village, town, rampart
Q
 qianfront
 qiantanshoal, bank
 qu area
 qundao archipelago
 qunjiao reefs
S
 san.....three
 san..... see shan
 san-chiao-chou.....delta
 seu..... see hsu
 sha..... sandbank, islet, sand, low sandy point
 sha-chiao.....sandspit
 sha-ch'iu.....sand dune
 shan.....mountain, hill, island
 shang.....upper
 shan-hucoral
 shan-hu-chiaocoral reef
 shan-momountain range
 shan-sha bar, sandbar
 shan-tienmountain summit
 shao..... small, few
 shatan.....sandy shoal, sand flats
 sha-tsui.....sandspit
 shatui.....sandbank
 shazhou.....sandbank
 shazui.....sandspit
 shen..... deep
 sheng.....province
 shirock
 shihcity, market, store, rock, hill

thih-t'ai.....ridge of rocks
 shih-ti.....swamp
 shu.....tree
 shu-lin.....forest
 shuiwater, river
 shuidao..... channel
 shui-lu.....channel, passage
 shui-tao seeshuidao
 sitemple
 ssu.....monastery, temple, four
 su..... seehsu
 T
 ta.....tower, great, large
 t'a.....pagoda
 tai see tui
 tan..... flat
 t'an.....banks, flats, rapids, lake
 tang.....village
 t'ang.....embankment, pond
 tao.....island, road, paddy field
 t'ao.....bay
 tao-tzuislet
 tau.....see tao
 tautze..... see t'o-tzu
 ti embankment, dyke, earth, ground, place, low, bottom
 t'ien.....arable land, field
 ting summit, mountain
 t'o.....stone, rocky eminence
 t'o-tzu stone, rocky knob, islet
 tou or t'oucape, headland, point
 t'ou-tzucape, headland, point
 tow see tou
 tsui..... cape, point, spit
 tsui-tsu..... cape, point, spit
 tsui-wei..... cape,point, spit

ts'unvillage

tu ferry, ford

tuan.....village

tuimound, bank

tui-tsui.....bank, spit

tunvillage

tung east

W

wa..... swamp

waiouter

wan.....bay, gulf bend in river

weiheadland, tail. walled town

X

xi.....west, creek

xiastrait

xiancounty

xiaosmall, little

xin..... new

xuvillage

Y

yai cliff

yanrock

yang ocean, enclosed portion of the sea, channel

yehmoorland

yenembankment, dyke, rock, reef, cliff

yen't'an.....salt pan

yen-tien.....saltpan

yen-ch'ang.....saltworks

yuisland, islet

yunhe canal

yun-ho..... canal

Z

zhaivillage

zhang.....mount

zhen.....town

zhongmiddle, central
zhoushoal, islet
zhuang.....village
zuipoint, spit
zeizi.....point
zulangdi breakwater

Chinese

English

Pub. 161

152

Glossaries

Vietnamese

Vietnamese

English

A

ap.....hamlet

B

ban.....village

ban dao..... peninsula

ben tau.....seaport

bien.....sea

botinlet

C

cang.....mountain

chu..... hill, mountain

cua.....mouth of river

cudao, culaoisland

D

dar, dia..... river

doihigh hill, cape

duong ocean

G

giang..... large river

giong hill

H

hon small island

hoang..... lake, lagoon

K

kas.....island

khumvillage

kinh strait, canal

kompongvillage

L

lang.....village

luon irrigation canal

M

muicape, point

muon g irrigation canal

N

nhai thiriver port

nui hill, mountain

nuocriver, water

O

oan gulf

ong stream

P

phnom.....hill

pho branch of river

phum.....village

poulu..... island

prek..... stream

Q

quan dao..... archipelago

R

rach stream

ran.....breaker, reef

ranh..... canal

roc..... canal

S

sa.....sandback

se, son, song..... river

soung, sung..... island

stoeung..... river

T

than shallows, bar of river

thom.....under water

tieu reef, coral reef

tong, tot.....mountain

tram..... woods

tranh.....village

V

vam river mouth

vinh.....bay, gulf

W

wattemple

X

xa, xomvillage

xeo stream

xuyen river